

**The Philadelphia Parking Authority
701 Market Street, Suite 5400
Philadelphia, PA 19106**

**Bid No. 26-10
Trailer Plumbing Connections at Lot 10
Addendum One**

To: See Email Distribution List

From: Shannon Stewart
Manager of Contract Administration

Date: April 16, 2026

No Pages: 1 plus Appendix A

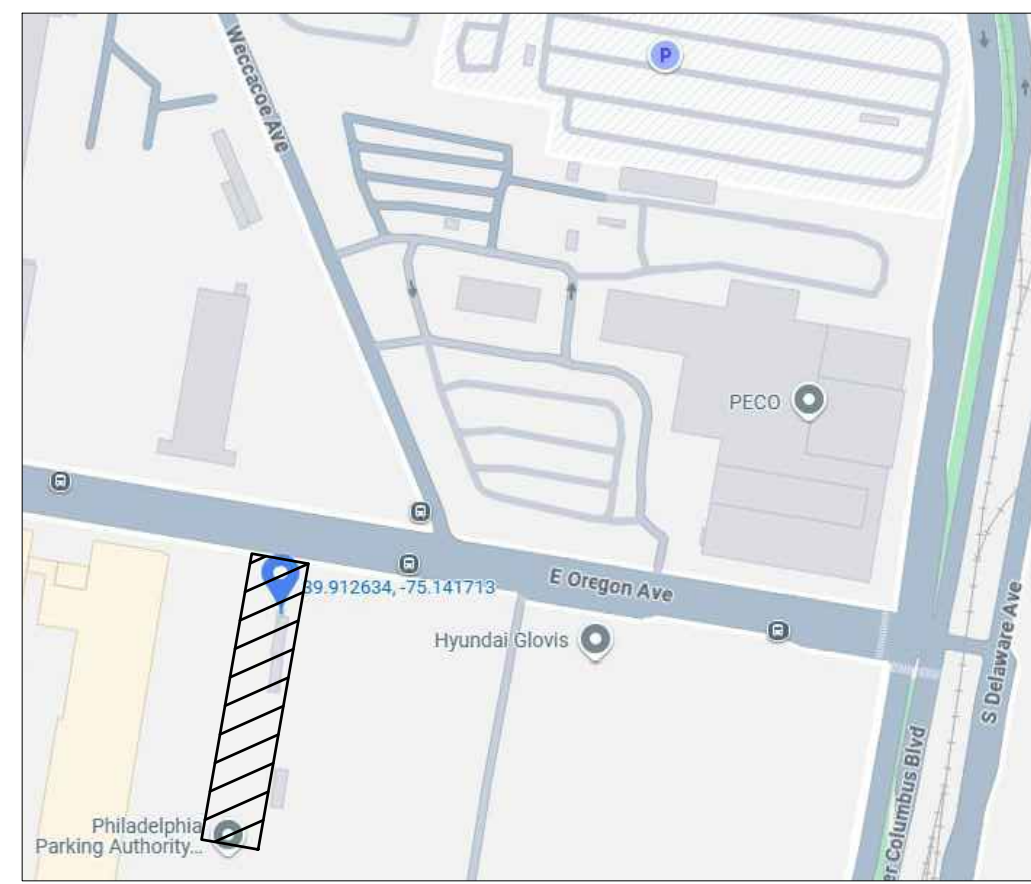
This addendum is issued on April 16, 2026, prior to the bid due date to add, delete, modify, clarify and/or to respond to questions submitted by eligible Bidders regarding the work included in the above referenced solicitation.

QUESTIONS

1. **Question:** Can the approved utility plan be shared with the bidders please?
Response: See Appendix A of this addendum.
2. **Question:** The Philadelphia plumbing code does not allow Double check valves for Domestic services. Please advise as to which type of RPZ assembly is preferred.
Response: The backwater prevention design, utilizing double check valves, complies with the City Cross Connection Control Manual and has been reviewed and approved by the Water Department.
3. **Question:** If an RPZ is required per code, it cannot be installed underground and would require a hot box which would require power. Please advise.
Response: RPZ is not required.
4. **Question:** Where are the different sections of heat trace being powered from?
Response: The heat trace lines must be powered from the electrical boxes located in the breakroom trailer and the bathroom trailer.
5. **Question:** Is a storm line connection required in conjunction with the sanitary connection?
Response: The project does not involve storm line connection.

END OF ADDENDUM ONE

Appendix A
Approved Utility Plan



LOCATION MAP



ID	CONNECTION	SIZE	MATERIAL	CONNECTION METHOD	COMMENTS	PWD PUBLIC UTILITY
W1	DOMESTIC WATER CONNECTION	2"	COPPER	FERRULE CONNECTION	BFP PROVIDED	8" DI WATER MAIN
S1	SANITARY SEWER LATERAL	6"	DUCTILE IRON (DI)	SADDLE CONNECTION		30" VIT. SAN. LINE - COMBINED SEWER

- PROJECT DESCRIPTION:**
- ALTERATION OF EXISTING 1 STORY COMMERCIAL TRAILER BUILDING
 - INSTALL DOMESTIC WATER AND SANITARY SEWER SERVICES TO TEMPORARY TRAILER BUILDINGS
 - NO DEMOLITION OF EXISTING STRUCTURES
 - NO CHANGES TO SITE STORM WATER RUNOFF
- PROJECT DATA:**
- MAXIMUM FLOW RATE FOR DOMESTIC ONLY SERVICE LINE: 35 - 40 GPM EST. (BASED ON FIXTURE UNITS)

- SITE DATA INFORMATION:**
- TOTAL SITE SQUARE FOOTAGE: 215,854 SF
 - TOTAL EARTH DISTURBANCE: 4,400 SF
 - PWD UPR TRACKING NUMBER: UPR-FY26-PPAL-8413
 - PWD STORM WATER TRACKING NUMBER: N/A

ENGINEER:
O&S ASSOCIATES
C/O NANCY WANG
732-854-4464
1777 SENTRY PARKWAY WEST
BUILDING 12, SUITE 101
BLUE BELL, PA 19422

OWNER:
PHILADELPHIA PARKING AUTHORITY
C/O MELISSA HOCH
215-813-8578
701 MARKET STREET
PHILADELPHIA, PA 19106

OWNER & DEVELOPER:

PHILADELPHIA PARKING AUTHORITY

ARCHITECT & ENGINEER:
O&S ASSOCIATES
ENGINEERS & ARCHITECTS
1777 Sentry Parkway West
Building 12, Suite 101
Blue Bell, PA 19422
610.628.9400
oasassociates.com

NEW JERSEY | NEW YORK | PENNSYLVANIA
OHIO | MARYLAND/VIRGINIA | FLORIDA

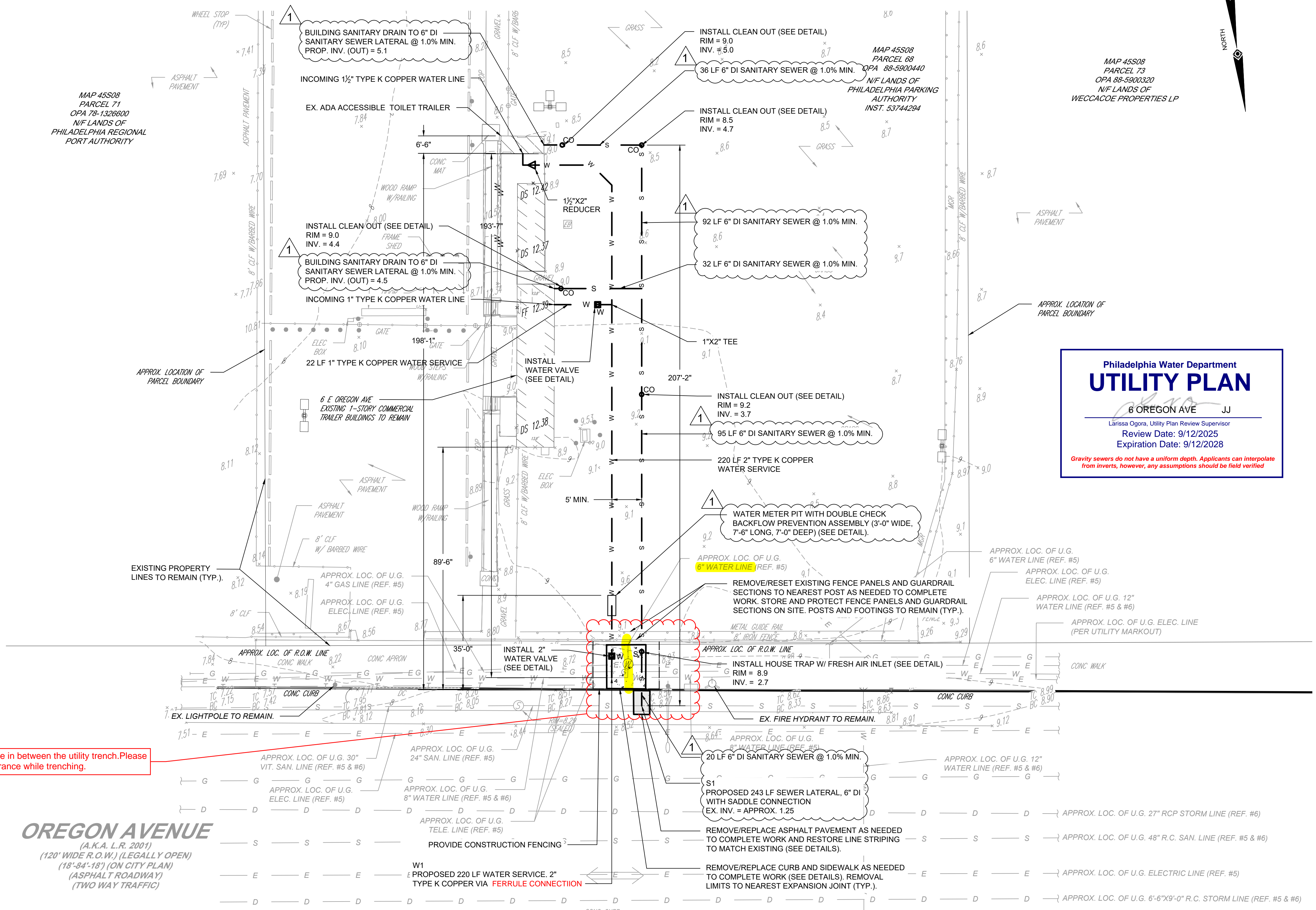
SEAL:

DRAFT

**PHILADELPHIA PARKING AUTHORITY
PROPOSED UTILITY SERVICE CONNECTION**

6 E OREGON AVE
MAP 45S08, PARCEL 68, OPA 88-5900440
CITY AND COUNTY OF PHILADELPHIA, 39TH WARD
COMMONWEALTH OF PENNSYLVANIA 19148

- LEGEND**
- 124 EXISTING CONTOUR
 - 125 EXISTING SPOT ELEVATION
 - 123.45 EXIST. TOP OF CURB ELEVATION
 - 123.55 EXIST. BOTTOM OF CURB ELEVATION
 - 123.45 EXIST. FINISHED FLOOR ELEVATION
 - 123.45 EXIST. DOOR SILL ELEVATION
 - OH OVERHEAD WIRES
 - E APPROX. LOC. UNDERGROUND ELECTRIC LINE
 - G APPROX. LOC. UNDERGROUND NATURAL GAS LINE
 - S APPROX. LOC. UNDERGROUND SANITARY LINE
 - T APPROX. LOC. UNDERGROUND TELEPHONE LINE
 - W APPROX. LOC. UNDERGROUND WATER LINE
 - D APPROX. LOC. UNDERGROUND DRAINAGE LINE
 - DEPRESSED CURB
 - HYDRANT
 - ELEC. BOX
 - ELEC. METER
 - SANITARY/SEWER MANHOLE
 - WATER MANHOLE
 - CATCH BASINS
 - CONDUIT PIPE
 - UTILITY POLE
 - PAINTED BIKE LANE
 - PAINTED HANDICAPPED
 - PAINTED ARROWS
 - METAL COVERS
 - SIGN
 - BOLLARD
 - METAL GUIDE RAIL
 - GATE POST
 - AIR STATION
 - AREA LIGHT
 - PARKING SPACE COUNT
 - BUILDING FOOTPRINT AREA
 - BUILDING
 - CHAIN LINK FENCE
 - DEPRESSED CURB
 - EDGE OF PAVEMENT
 - FIRE DEPARTMENT CONNECTION
 - HANDICAP
 - HEIGHT
 - METAL COVER
 - SOLID BLUE LINE
 - SOLID WHITE LINE
 - TYPICAL
 - BOTTOM OF STRUCTURE
 - NO VISIBLE PIPE
 - UNKNOWN TERMINUS



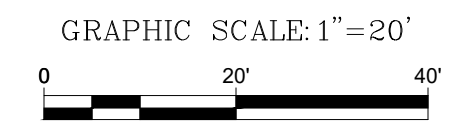
There is a 6" water line in between the utility trench. Please make at least 2ft clearance while trenching.

- NOTES:**
- THERE WILL BE NO PROPOSED EASEMENTS THROUGH PRIVATE PROPERTY.
 - SITE WILL BE MANAGED BY OWNER.
 - THERE WILL BE NO PROPOSED CRANE FOOTING LOCATION.
 - THERE WILL BE NO PROPOSED SOIL STOCKPILE LOCATION.
 - THERE WILL BE NO PROPOSED CONSTRUCTION SITE ENTRANCE.
 - DEVELOPER/OWNER WILL COMPLY WITH ALL PHILADELPHIA REGULATIONS PERTAINING TO PROPER ABANDONMENT AND/OR REUSE OF WATER SERVICE LINES AND SEWER LATERALS. PROOF OF ABANDONMENT AND/OR WATER DISCONTINUANCE MUST BE PROVIDED UPON REQUEST.
 - TRAILER CONNECTIONS TO BE COORDINATED WITH ARCHITECT / OWNER.

HYDRANT FLOW TEST RESULTS

DATE OF TEST:	APRIL 6, 2021
STATIC PRESSURE, PSI:	55 PSI
RESIDUAL PRESSURE, PSI:	48 PSI

PROPOSED UTILITY SERVICE CONNECTION PLAN
SCALE: 1" = 20'



THE COMMONWEALTH OF PENNSYLVANIA REQUIRES NOTIFICATION BY EXCAVATORS, DESIGNERS, OR ANY PERSON PREPARING TO DISTURB THE EARTH'S SURFACE ANYWHERE IN THE STATE.

NO.	REVISIONS	DATE
1	PWD-UPR COMMENTS	09/05/25
	SUBMISSION	

DRAWN BY: TZ
DRAWN ON: 7/31/25
CHECKED BY: NW
SCALE: AS NOTED
SUBMISSION DATE: 7/31/25
PROJECT NO.: 225002

DRAWING TITLE:
PROPOSED UTILITY SERVICE CONNECTION PLAN

DRAWING NO.:
C-03 3 OF 4