

**The Philadelphia Parking Authority
701 Market Street, Suite 5400
Philadelphia, PA 19106**

Bid No. 24-18

**Tenant Fit-Out at Parkade on 8th Street Garage and Swanson Street Office
Renovations
Addendum Two**

To: See Email Distribution List

From: Shannon Stewart
Manager of Contract Administration

Date: August 9, 2024

No Pages: 5 plus Appendix A-F

This addendum is issued on August 9, 2024, prior to the bid due date to add, delete, modify, clarify and/or to respond to questions submitted by Prospective Bidders regarding the work included in the above referenced solicitation.

CHANGES TO THE BID DOCUMENT

1. **Revised Bid Forms: Revised Bid Forms for the GC, Plumbing and Fire Protection, and Electrical have been revised and are attached as Appendix B-D.**
2. **Section 01 12 00 has been revised and is attached as Appendix E.**
3. **Section 01 50 00 has been revised and is attached as Appendix F.**

MATERIAL SUBSTITUTION REQUEST

1. **Substitution: Please review attached product catalogs for approval/substitution of lighting controls. See Appendix A.**

Response: Sensorworx low voltage wired controls are an approved substitution. Electrical contractor to confirm control intent per E-401.

QUESTIONS

1. **Question: Please confirm we will have use of elevator for trash load out at Swanson Street Office Renovation during normal hours.**

Response: Elevator usage is permitted but must be kept clean and usable throughout the course of the project.

2. **Question: Please confirm if there is any place in the 8th Street Garage and at the Swanson Street Office parking lot where the GC will be able to land dumpsters.**

Response: Swanson Street: Dumpsters may be placed on the property in the rear of the building.

Parkade on 8th: Dumpsters may be placed on Filbert Street only, provided all necessary permits are obtained.

3. **Question:** Please confirm all loose furniture that is currently within the spaces at 8th Street Parkade and in the Swanson Street Offices will be removed prior to GC site mobilization.

Response: Swanson Street: All furniture that the Authority intends to keep will be removed prior to mobilization. Cubicles, chairs, desks and dividers located in room 211 will be included in the demolition.

Parkade on 8th: All loose items located in Suite J (identified as BAA) will be removed prior to mobilization.

4. **Question:** Please confirm it is acceptable to close the sidewalk along 8th street in order to complete the renovation work.

Response: Sidewalk closure along 8th Street will not be permitted.

5. **Question:** Please confirm building permit and associated costs are by PPA.

Response: All permits associated with each trade contract will be acquired by the Contractor and will be reimbursed at permit cost by the Authority as Change Order #1. Please see Appendix B-D of this addendum for updated Bid Forms.

6. **Question:** Please provide descriptions for all unit prices. What partition type? Does this include painting? Does SOG replacement include demo? Excavation by MEPS?

Response: Please see Appendix B-D of this addendum.

7. **Question:** GC Bid Form calls for a 6" Meter Pit Unit Price. Please elaborate as there is nothing shown on the drawings.

Response: This has been removed from the Bid Form. Please see Appendix B of this addendum.

8. **Question:** PPA Parkade – the plan view of the bullet resistant transaction windows on A-600 call out six type 6 glass and the elevations on A-601 and A-602 call out five type 6A and one type 6. Can we get clarification on which detail to follow?

Response: Follow details S/A-601, A/A-602, G/A-602 and K/A-603 for bullet resistant transaction windows.

9. **Question:** Multiple Contract Summary 011200, Section 1.4.B indicates for GC prime to provide a common use field office and parking for all personnel performing work. What exactly does this mean? Is the GC expected to pay for other Primes parking and rent an office space for this project, along with power and telephone? There is no practical room for a trailer. Please confirm this section is void.

Response: Removed. GC to provide a common space for all trades within the job sites. Please see revised Section 01 12 00, attached as Appendix E of this addendum.

PARKING:

Swanson Street: Contractors will be permitted to park in the rear of the building.

Parkade on 8th: Each prime will be allotted 3 parking passes for the Parkade on 8th garage. The height restriction for this location is 6'7". Parking of any additional or over-sided vehicle is the responsibility of the Contractor.

10. **Question:** Please confirm trenching and excavation is the responsibility of each Prime. The GC would not hire a separate contractor for an interior renovation to perform this work.

Response: Confirmed. SOG concrete repairs are required to be completed by the GC per the Bid Form.

11. **Question:** Please confirm sleeves and metal fabrication supports are the responsibility of each Prime. The GC would not install sleeves, hangers and supports for MEPS work.

Response: Confirmed. Coordination is the responsibility of GC.

- 12. Question:** Please confirm cutting and patching are the responsibility of each Prime for their own work. The GC would not be responsible for penetrations from MEPS Primes
- Response: Confirmed. Coordination is the responsibility of GC.**
- 13. Question:** Please confirm through penetration firestopping is the responsibility of each Prime. It is not typical for a GC to provide this for other Primes.
- Response: Confirmed. Coordination is the responsibility of GC.**
- 14. Question:** Please confirm the PPA will be paying for all utility use chargers, temp meters and temp connections. Do the spaces currently have power and water available now?
- Response: The Authority will pay for utility charges incurred for existing power and water usage.**
- 15. Question:** Multiple Contract Summary 011200, Section 1.6. appears to include numerous activities that are not site specific to this project, but rather a boiler plate spec. Please revise to reflect actual project parameters.
- Response: Section 01 12 00 has been revised, please see Appendix E of this addendum.**
- 16. Question:** Spec Section 015000 conflicts with language in the Multiple Contract summary in reference to utility use charges. Please clarify.
- Response: The Authority will pay for utility charges incurred for existing power and water usage.**
- 17. Question:** Spec Section 015000 lists numerous activities that are not site specific and do not apply to this project, but rather a boiler plate spec. Please revise to reflect actual project parameters.
- Response: Section 01 50 00 has been revised, please see Appendix F of this addendum.**
- Question:** Please confirm there are no spray fireproofing requirements in both project spaces.
- Response: Confirmed, no spray fireproofing is required.**
- 18. Question:** Please confirm all MEPS demolition and safing off is to be included with each applicable MEPS prime, including hauling debris to their own dumpster.
- Response: GC is responsible for providing dumpsters for all trades to use. MEPS selective demolition is the responsibility of the MEPS contractors.**
- 19. Question:** Swanson Street - Please confirm Demo Note 2 on A-2 is By Owner.
- Response: All furniture that the Authority intends to keep will be removed prior to mobilization. Cubicles, chairs, desks and dividers located in room 211 will be included in the demolition.**
- Question:** Swanson Street - Please confirm Demo Note 7 plumbing fixture items and piping on A-2 is with Plumbing Contractor scope of work.
- Response: Confirmed.**
- 20. Question:** Swanson Street - Please confirm Demo Note 8 & 9 electrical and HVAC items and piping on A-2 is with MEPS Contractor scope of work.
- Response: GC responsible for notes 8 & 9 on A-2.**
- 21. Question:** Swanson Street - Please confirm storage location for Demo Note 11, 12, and 13.
- Response: On-site storage location to be confirmed by the Authority during construction.**
- 22. Question:** Please confirm if there is any signage scope on the project.
- Response: Permanent bathroom signage is required as a part of this project. Temporary signage is to be provided for site security and safety as required.**

23. Question: During walk through of 8th street Parkade. Some spaces were missing concrete slabs. Are these going to be documented on the plans? Please identify allowance for this work or will this all be unit price work?

Response: Please see Appendix B-D of this addendum.

24. Question: Please confirm slab demo, trenching, excavation and concrete patching for plumbing underground is included with the Plumbing Prime Contractor.

Response: Confirmed.

25. Question: Can you confirm if the projects are running consecutive or one after the other?

Response: The selected bidder may run the projects consecutive or one after the other. If you choose to run them one after the other, the office renovations at Swanson Street must be completed first and within the time frame identified in the bid documents. If you can propose a schedule that's advantageous, both financially and schedule-wise to the Authority where both locations are being completed at the same time, the Authority will take that into consideration.

26. Question: The apprentice program, every trade subcontractor must have an approved apprentice program; correct and the GC, also?

Response: Correct.

27. Question: Does this project have the secured funding to start?

Response: Yes.

28. Question: What is the anticipated start?

Response: The contract time begins once the permits have been issued and the Authority's project manager issues the notice to proceed to the contractor.

29. Question: Regarding the Class A Apprenticeship Program requirements, to comply with these requirements for each trade, we ensure that all our subcontractors are enrolled in such programs. Could you please confirm if this approach meets the project requirements?

Response: Please refer to Article 21 of the Instruction to Bidders and section 14.16 of the Bid Form for the requirements and submittals regarding the Certified Apprenticeship Program Participation.

30. Question: Please indicate responsible party for saw cutting, excavation, back-fill and repair of below grade raceways for floor boxes?

Response: Electrical Contractor will be responsible for saw cutting, excavation, back-fill and repair of below grade raceways for floor boxes.

31. Question: Please provide specification or make and model number of floor box and approved equivalent manufactures.

Response: Floor outlets are specified in 26 05 19 Basic Material and Methods, section 2.04 Switches and Wiring Devices, D. Floor Outlets.

32. Question: Please clarify coordination, scope, and responsibility of "smart glass" as shown in 2 & 3 on A-800.

-
- CURRENT WILL CHANGE THE STATE FROM TRANSPARENT TO OPAQUE AND VICE VERSA. THE FILM IS BONDED TO THE GLASS WITH
2. EACH OFFICE SHALL BE SWITCHED INDEPENDENTLY WITH POWER AND SWITCHING AS PER MEP DRAWINGS.
 3. CONTRACTOR TO PROVIDE ALL REQUIRED HARDWARE, WIRING, CONTROLS, ETC. FOR A FULL AND COMPLETE INSTALLATION.
 4. CONTRACTOR TO COORDINATE ALL REQUIREMENTS WITH FRAME MANUFACTURER.
 5. CONTRACTOR TO SUBMIT FULL SHOP DRAWINGS FOR REVIEW AND APPROVAL.

BALLISTIC DOORS AND FRAMES

NO SCOPE SHOWN ON MEP

Response: Electrical Contractor to provide 15A GFCI for SmartGlass circuit at each department electrical panel and install all equipment as per approved manufacturer shop drawings and manufacturer installation instruction. Coordinate switch location with architect.

END OF ADDENDUM TWO

Bid No. 24-18 Addendum #2 -Appendix A
Material Substitution Product Catalogs

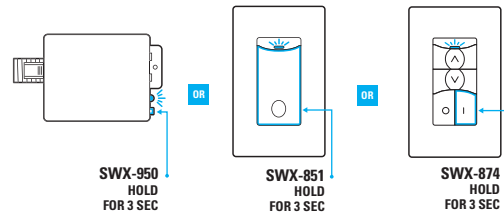


SENSORWORX®

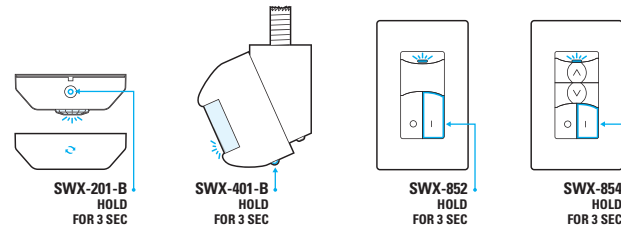
WIRELESS PAIRING AS EASY AS 1, 2, 3...

PAIRING INSTRUCTIONS
SIMPLE WIRELESS PAIRING 3 SECONDS PER DEVICE

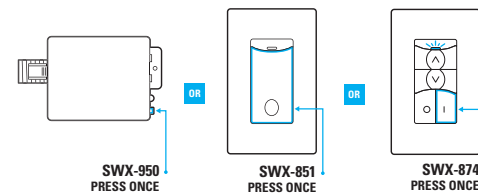
1 STEP 1
POWER PACK OR WALL SWITCH OR PHASE DIMMING
LOAD CONTROLLERS



2 STEP 2
WIRELESS SENSORS & REMOTE SWITCHES



3 STEP 3
POWER PACK OR WALL SWITCH OR PHASE DIMMING
LOAD CONTROLLERS



SENSORWORX.com
©2023 BLP TECHNOLOGIES, INC. ALL RIGHTS RESERVED.

SCAN TO
ACCESS
VIDEOS
SHOWING
PAIRING
PROCESS



SENSORWORX®

WIRELESS CONTROLS



WIRELESS
HAS NEVER
BEEN SO **EASY**



WIRELESS DESIGNS AS EASY AS A, B, C...



SENSORWORX®

- Provides simple, code-compliant solutions for individual room/area applications
- Hybrid wireless/wired architecture flexibility
- 80' wireless range w/o obstructions
- Supports up to 50 wireless devices per group

A START BY CHOOSING A WIRELESS LOAD CONTROLLER

WIRELESS WALL SWITCH CONTROLLER

ACCOMMODATES NEUTRAL & NO NEUTRAL INSTALLATION

This intuitive wall switch load controller requires no neutral connection or minimum load to operate.



WALL SWITCH
LOAD CONTROLLERS

SWX-851
Available in 6 colors

- Enclosure is 25-40% shallower than other wall controllers (< 1" depth into wallbox)
- Configurable operational modes (e.g., occupancy, vacancy, and more)
- Intuitive momentary button
- Blue locator LED when off
- 800W@120VAC / 1200W@277VAC

Model #	Description
SWX-851-xx	Wireless Wall Switch Load Controller, No Neutral Required, <xx = color>

WIRELESS POWER PACK & FIXTURE CONTROLLERS

SWITCHES AND DIMS FULL CIRCUITS OF LIGHTING & PLUG LOADS OR SINGLE FIXTURES

Load controllers with capabilities ranging from switching a plug load and/or dimming a full circuit of lighting, to individual fixture control.



POWER PACK
LOAD CONTROLLER

SWX-950
SWX-950-D2 (D1)
SWX-950-AX
SWX-950-AX-D2
20A Rated @ 120/277 VAC

- Configurable operational modes (e.g., occupancy, vacancy, and more)
- Simplifies partial on & partial off applications
- Integrated test/programming button
- Optional wired sensor & wall station connectivity(e.g., hybrid architectures)

Model #	Description
SWX-950	Wireless Power Pack Load Controller, 20A
SWX-950-D2	Wireless Power Pack Load Controller, 20A w/ 0-10V Dimming (Class 2 Dim wires)
SWX-950-D1	Wireless Power Pack Load Controller, 20A w/ 0-10V Dimming (Class 1 Dim wires)
SWX-950-AX	Hybrid Wireless/Wired Power Pack Load Controller, 20A
SWX-950-AX-D2	Hybrid wireless/Wired Power Pack Load Controller, 20A, 0-10V Dimming
SWX-951-D1	Wireless Fixture Controller, 1A w/ 0-10V Dimming (Class 1 Dim wires)

WIRELESS PHASE DIMMER

FORWARD AND REVERSE PHASE DIMMERS FOR 120V LIGHTING LOADS

Units convert from ELV to forward phase dimming enabling ultimate jobsite flexibility and performance.



PHASE DIMMER

SWX-874
4-Button
Phase Dimmer
& Switch

- Reverse Phase (ELV) and/or Forward Phase options
- No minimum load required
- Easy to configure dimming parameters (e.g., high/low trim levels, curve types)
- 3-Way + Dimming when wirelessly linked to remote dimmers
- Available in 6 colors

Model #	Description
SWX-874-ELV-xx	Wireless Phase Dimming Load Controller, 120VAC, Reverse or Forward Phase, <xx = color>

B ADD THE SENSOR(S) NEEDED FOR THE SPACE

WIRELESS OCCUPANCY SENSORS

PIR OR DUAL TECH. (PIR/ACOUSTIC) DETECTION - BATTERY POWERED

PIR models designed for a 10 year battery life, dual tech. designed for 5 year life.

- Pairs in seconds with wireless wall switch or power pack controllers
- Compact size & matte finish
- Convenient coverage test mode
- Integrated Daylight Harvesting (Optional)
- Multiple contractor-friendly mounting styles



CEILING PIR
SENSOR

SWX-2x1-B
Passive Infrared (PIR)
360° Small Motion Coverage
8-12' Mounting Heights,
~500 ft²

CEILING DUAL TECH
(ACOUSTIC) SENSOR

SWX-221-B
Dual Tech
360° Small Motion Coverage
8-12' Mounting Heights,
~500 ft²



WIDEVIEW SENSORS

SWX-4x1-B
PIR or Dual Tech
Wide View
Small Motion
Coverage to 40 ft.

HALLWAY SENSORS

SWX-402-B
PIR
Hallway View
Long Range Coverage
to 100 ft.

WIRELESS DAYLIGHT SENSORS



STANDALONE
DAYLIGHT SENSOR

SWX-250-B
Daylight Harvesting
(Dimming) or On/Off
Photocell Control

Model #	Description
SWX-201-B	Wireless Wall Switch Load Controller, No Neutral Required, <xx = color>
SWX-211-B	Wireless Small Motion 360° Ceiling Sensor w/ Daylight Harvesting Photocell - PIR, Battery Powered
SWX-221-B	Wireless Small Motion 360° Ceiling Sensor - DualTech, Battery Powered
SWX-401-B	Wireless Wide View Sensor - PIR, Battery Powered
SWX-421-B	Wireless Wide View Sensor - Dual Tech, Battery Powered
SWX-402-B	Wireless Hallway Sensor - PIR, Battery Powered
SWX-250-B	Wireless Daylight Harvesting Sensor, Battery Powered

C FINISH WITH REMOTE SWITCH OR DIMMER

WIRELESS REMOTE DIMMER & SWITCH

INTUITIVE OPERATION & EASY-TAP BUTTONS - BATTERY OR LINE POWERED

These stylish wall stations make multi-way switching and dimming applications a snap.



SWITCH & DIMMERS

SWX-854
4-Button Dimmer
& Switch

SWX-852
2-Button Switch

- Pairs in seconds with wireless wall switch or power pack controllers
- Battery powered option designed for 10 year life
- Line powered option powers from 120-277VAC
- Mounts to standard wall boxes, no adapters required
- Matches modern styling of wired **SENSORWORX** wall controls

Model #	Description
SWX-852-B-xx	Wireless Remote Switch (On/Off), Battery Powered, <xx = color>
SWX-852-2-xx	Wireless Remote Switch (On/Off), Line Powered, <xx = color>
SWX-854-B-xx	Wireless Remote Dimmer & Switch (On/Off/Raise/Lower), Battery Powered, <xx = color>
SWX-854-2-xx	Wireless Remote Dimmer & Switch (On/Off/Raise/Lower), Line Powered, <xx = color>

WIRELESS HAS NEVER BEEN SO EASY!

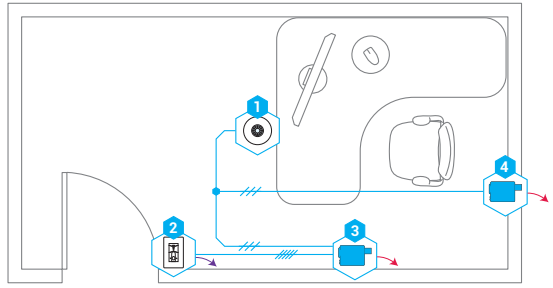
SENSORWORX.com



PRODUCT WIRING & INSTALLATION

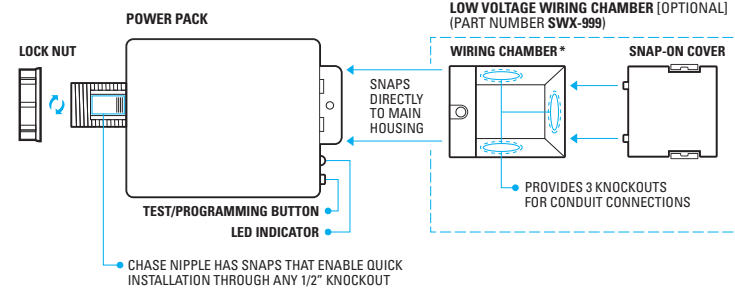
AS EASY AS 1, 2, 3...

1 STEP 1
LOCATE THE PRODUCT PLACEMENT IN THE ROOM

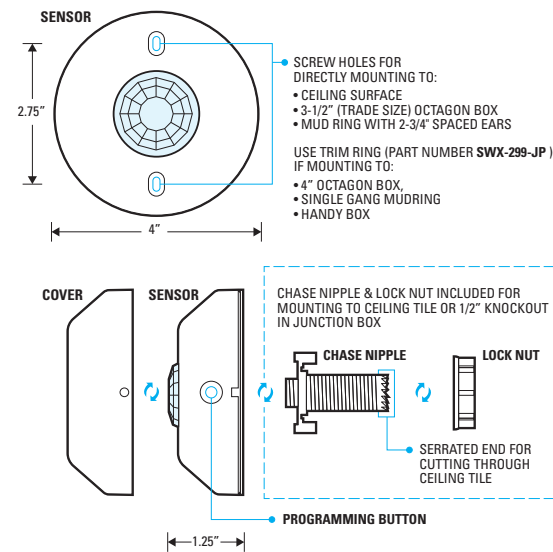


2 STEP 2
MOUNT DEVICES USING SIMPLE METHODS SHOWN BELOW

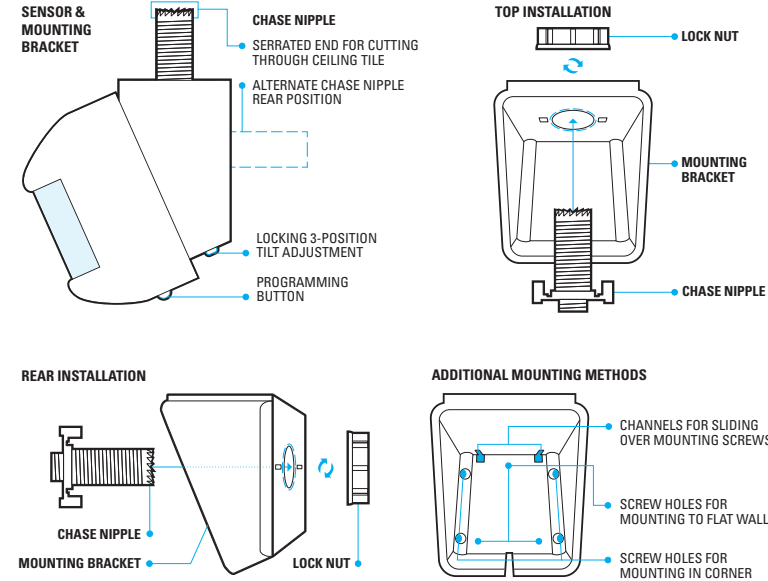
POWER PACK MOUNTING



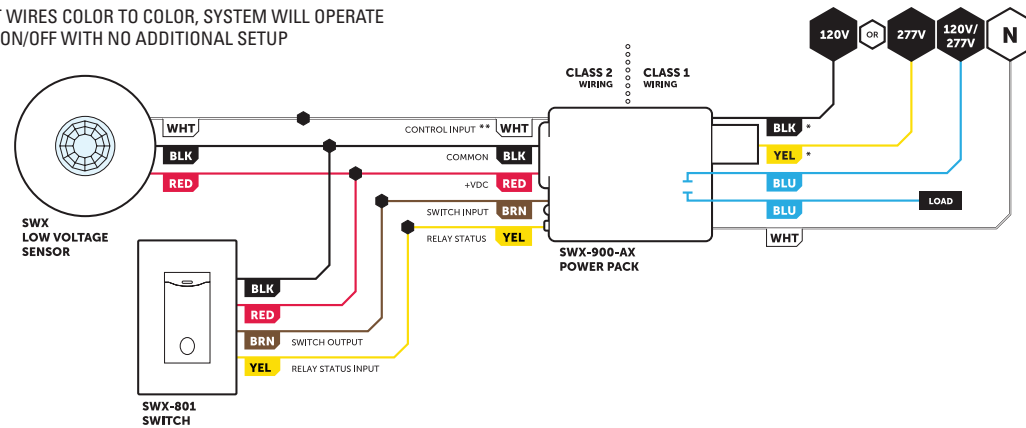
CEILING SENSOR MOUNTING



WIDE VIEW / HALLWAY SENSOR MOUNTING



3 STEP 3
CONNECT WIRES COLOR TO COLOR, SYSTEM WILL OPERATE AS AUTO ON/OFF WITH NO ADDITIONAL SETUP



LOW VOLTAGE WIRED CONTROLS

PRODUCT SELECTION GUIDE



WIRED

WHERE SIMPLE IS THE KEY TO **SUCCESS**





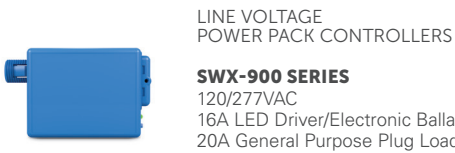
- Provides simple, code-compliant solutions for individual room/area applications
- Out-of-the-box functionality for Auto ON/OFF control
- Vacancy (Manual On/Auto Off), Partial Off/On, & daylight harvesting options available

A START BY CHOOSING A POWER PACK

SWX-900 SERIES POWER PACK CONTROLLERS

SWITCHES AND DIMS FULL CIRCUITS OF LIGHTING & PLUG LOADS

Load controllers with capabilities ranging from switching a full circuit of lighting and plug loads to 0-10V step dimming.



LINE VOLTAGE
POWER PACK CONTROLLERS

SWX-900 SERIES
120/277VAC
16A LED Driver/Electronic Ballasts
20A General Purpose Plug Loads

- Powers Low Voltage Sensors
- Switches Line Voltage Loads
- Electronically Timed Switching Ensures Long Relay Life
- Plenum Rated (UL 2043)
- Optional Switch Input for Manual On, Hold On, or Hold Off operation
- Optional 0-10V Stepped Dimming Output for Partial Off/On Operation

MODEL #	DESCRIPTION
SWX-900	Power Pack, 120/277 VAC, 16A
SWX-900-AX	Power Pack w/ Auxiliary Switch Input, 120/277 VAC, 16A
SWX-900-AX-D2	Power Pack w/ Auxiliary Switch Input & 0-10V Step Dimming, 120/277 VAC, 16A

B ADD THE OCCUPANCY SENSOR(S) NEEDED FOR THE SPACE

LOW VOLTAGE OCCUPANCY SENSORS

PIR OR DUAL TECH. (PIR+ACOUSTIC) DETECTION

- Digital Passive Infrared (PIR) Motion Detection
- Added Passive Acoustic Detection (i.e. Dual Tech) Optional
- 360° Ceiling, 120° Wide View, & Hallway PIR Coverage Patterns
- Compact Size & Matte White (Standard) or Black (Optional) Finish
- Included Mounting Nipple Attachment with Integrated Hole Saw
- Multiple Contractor Friendly Mounting Methods
- Convenient Test Mode and Adjustable Time Delays
- Optional Photozell, Daylight Harvesting (0-10V), & Isolated Relay



CEILING PIR SENSOR
360° Passive Infrared Detection

SWX-201-1

- Best choice for smaller general use areas
- ~500 ft² small motion coverage @ 8-12' mounting heights

SWX-202-1

- Best choice for larger areas with mostly walking motion
- ~2000 ft² large motion coverage @ 8-15' mounting heights

CEILING DUAL TECH SENSOR
Adds Passive Acoustic Detection

SWX-221-1

- Best choice for areas with primarily sitting occupants
- ~500 ft² small motion coverage @ 8-12' mounting heights

SWX-222-1

- Best choice for larger areas with limited sitting occupants
- ~2000 ft² large motion coverage @ 8-15' mounting heights



HALLWAY SENSORS
Long Range Passive Infrared Detection

SWX-402-1

- Excellent for corridors & best in facing pairs
- Coverage to 100' @ 8-12' mounting heights

WIDEVIEW SENSORS
120° Passive Infrared Detection with Optional Acoustic Detection

- Best when corner mounted @ 8-12' heights
- ~40' small motion range
- ~70' large motion range

SWX-401-1
Passive Infrared Detection (PIR)
SWX-421-1
Dual PIR/Acoustic Detection

MODEL #	DESCRIPTION
SWX-201-1	Small Motion 360° Ceiling Sensor - PIR, Low Voltage
SWX-221-1	Small Motion 360° Ceiling Sensor - Dual Tech, Low Voltage
SWX-202-1	Large Motion 360° Ceiling Sensor - PIR, Low Voltage
SWX-222-1	Large Motion 360° Ceiling Sensor - Dual Tech, Low Voltage
SWX-203-1	High Bay 360° Ceiling Sensor - PIR, Low Voltage
SWX-401-1	Wide View Sensor - PIR, Low Voltage
SWX-421-1	Wide View Sensor - Dual Tech, Low Voltage
SWX-402-1	Hallway Sensor - PIR - Low Voltage

ADDITIONAL OPTIONS	DESCRIPTION
-AR	Adds Isolated Auxiliary Relay Output
-BK	Black Sensor Lid and Lens
-HE	High Humidity / Low Temp. Environment

C ADD PHOTOCELL OR DAYLIGHT HARVESTING CONTROLS

DAYLIGHT HARVESTING/PHOTOCELL CONTROL OPTIONS

- Standalone and an Occupancy Sensor Integrated Solution
- Multiple Operational Modes including Full On/Off Control and Daylight Harvesting (i.e. Dimming) to Low Trim or Off
- Auto-Setpoint Selection Mode
- Adjustable High & Low Dimming Trim Level



SOLUTION 1: STANDALONE DAYLIGHT HARVESTING/PHOTOCELL SENSORS

MODEL #	DESCRIPTION
SWX-250-1	On/Off Photozell - Ceiling Mount, Low Voltage
SWX-250-1-D	Daylight Harvesting Photozell - Ceiling Mount, Low Voltage, 0-10V Dimming



SOLUTION 2: OCCUPANCY SENSORS WITH INTEGRATED DAYLIGHT HARVESTING/PHOTOCELL OPTION

MODEL #	DESCRIPTION
SWX-211-1	Small Motion 360° Ceiling Sensor - PIR, Photocell, Low Voltage
SWX-211-1-D	Small Motion 360° Ceiling Sensor - PIR, Daylight Harvesting (0-10V), Low Voltage
SWX-231-1	Small Motion 360° Ceiling Sensor - Dual Tech, Low Voltage
SWX-231-1-D	Small Motion 360° Ceiling Sensor - Dual Tech, Daylight Harvesting (0-10V), Low Voltage
SWX-212-1	Large Motion 360° Ceiling Sensor - PIR, Photocell, Low Voltage
SWX-212-1-D	Large Motion 360° Ceiling Sensor - PIR, Daylight Harvesting (0-10V), Low Voltage
SWX-232-1	Large Motion 360° Ceiling Sensor - Dual Tech, Low Voltage
SWX-232-1-D	Large Motion 360° Ceiling Sensor - Dual Tech, Daylight Harvesting (0-10V), Low Voltage
SWX-213-1	High Bay 360° Ceiling Sensor - PIR, Photocell, Low Voltage
SWX-213-1-D	High Bay 360° Ceiling Sensor - PIR, Daylight Harvesting (0-10V), Low Voltage

ADDITIONAL OPTIONS	DESCRIPTION
-AR	Adds Isolated Auxiliary Relay Output
-HE	High Humidity / Low Temp. Environment

D FINISH WITH SWITCH OR DIMMER

SWX-80x SERIES LOW VOLTAGE WALL STATIONS

OPTIONAL SWITCHES FOR VACANCY OPERATION AND MANUAL ON/OFF/DIMMING CONTROLS

These intuitive wall stations can be wired to a SWX-900-AX for ON/OFF control and/or directly to 0-10V lighting for manual dimming control.



LOW VOLTAGE
SWITCHING/DIMMING
WALL STATIONS

SWX-801
SWX-803
SWX-804

- Decorator Style Fits Common Wall Plates (not included)
- Less than 1" Depth in Wall Box
- Multiway Switching Capable (e.g., 3-way, 4-way)
- LED Location Aid
- Available in White (WH), Ivory (IV), Light Almond (LA), Black (BK), & Red (RD)

MODEL #	DESCRIPTION
SWX-801-xx	Decorator On/Off Switch - 1-Button Momentary, Low Voltage, < xx = color >
SWX-803-xx	Decorator Dimmer & Switch - 3-Button, Momentary, Low Voltage, 0-10V, < xx = color >
SWX-804-xx	Decorator Dimmer & Switch - 4-Button, Momentary, Low Voltage, 0-10V, < xx = color >

Low Voltage Wall Stations with Integrated Occupancy Sensors also available, see website for details.

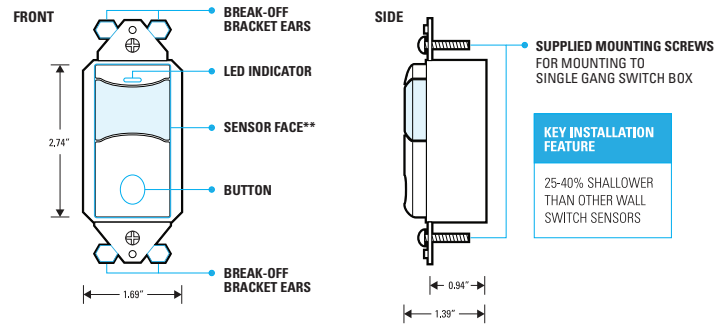




CONTRACTOR FRIENDLY INSTALLATION

WALL BOX ENCLOSURE

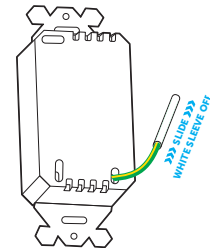
INSTALLATION FEATURES



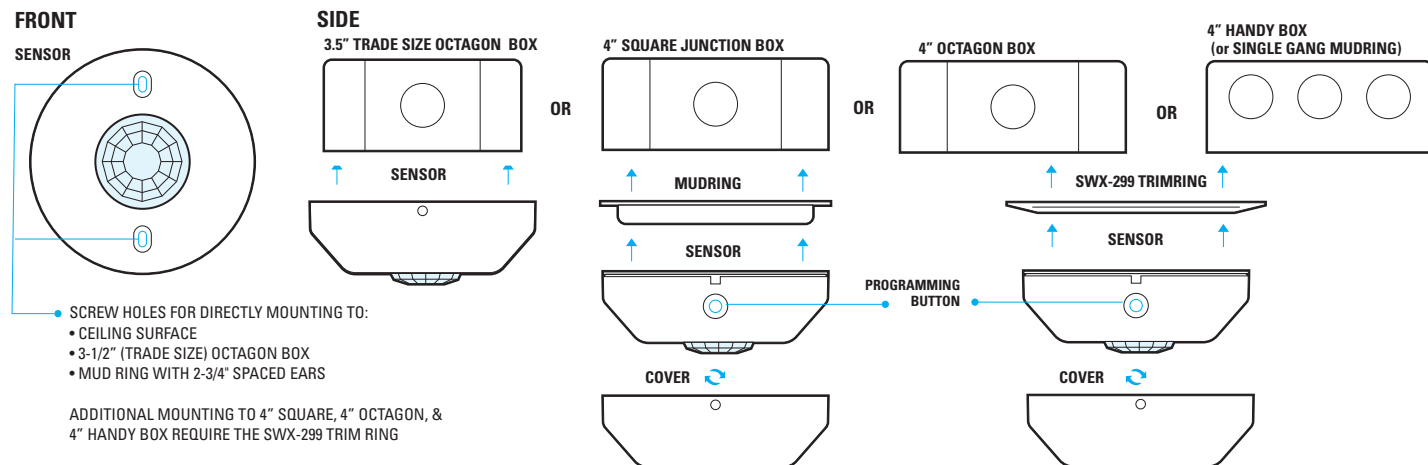
WIRING FEATURES

- The unit's two black wires are interchangeable (e.g., one connects to line power, one connects to load).
- Units work both in installations where neutral connection is available as well as installations where only ground connection is present.
- If no neutral is present, remove the white sleeve from the wire & connect the now Green/Yellow wire to ground (see diagram below).

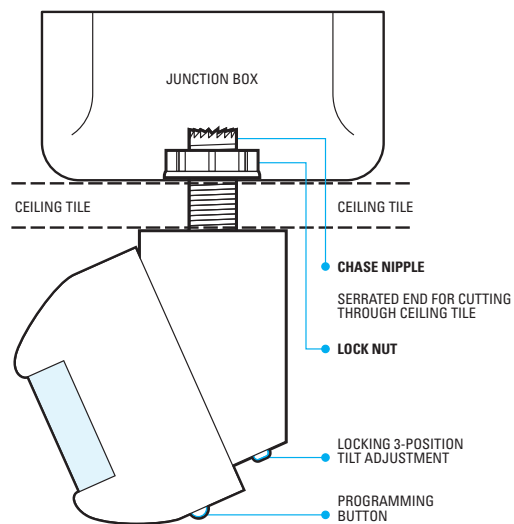
NEUTRAL TO GROUND WIRE CONVERSION DETAIL



CEILING ENCLOSURE

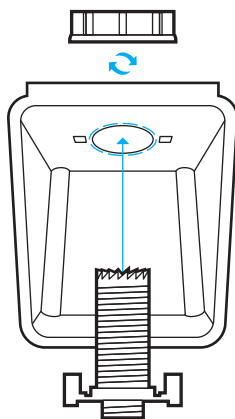


CORNER / BRACKET MOUNT ENCLOSURE

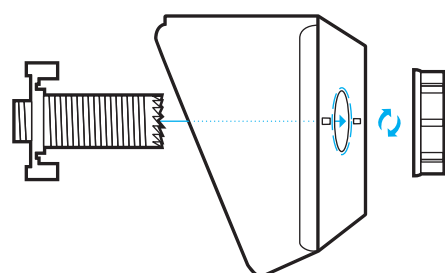


ADDITIONAL MOUNTING DIAGRAMS

TOP INSTALLATION



REAR INSTALLATION



STANDALONE LINE VOLTAGE CONTROLS PRODUCT SELECTION GUIDE



WHEN ONE DEVICE IS ALL YOU NEED!



STANDALONE PRODUCT SELECTION GUIDE

SCAN TO ACCESS ONLINE APPLICATION GUIDES

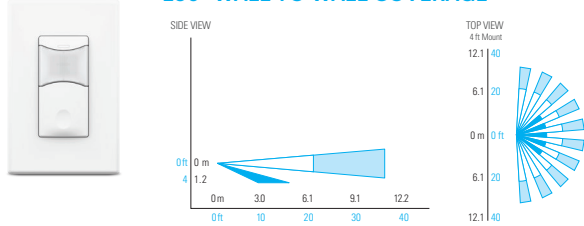


MAKE A SELECTION FROM EACH OF THE LETTERED OPTIONS BELOW

A ENCLOSURE STYLE & OCCUPANCY COVERAGE

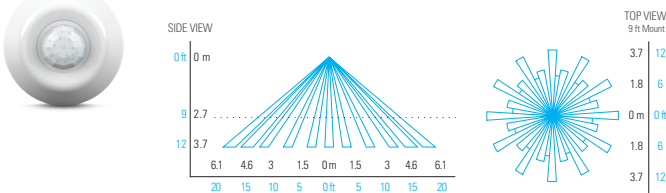
WALL BOX MOUNT (SWX-100 SERIES)

180° WALL TO WALL COVERAGE

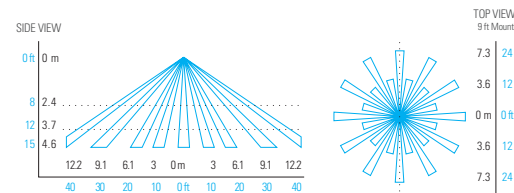


CEILING MOUNT (SWX-200-2 SERIES)

360° SMALL MOTION COVERAGE

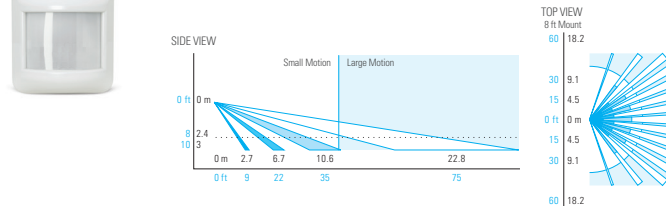


360° LARGE MOTION COVERAGE

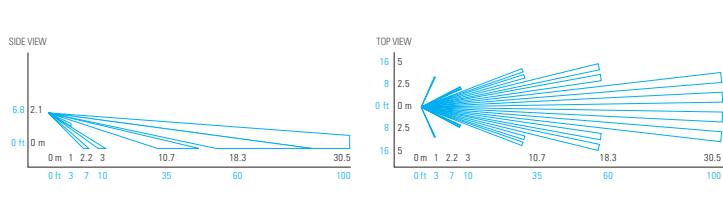


CORNER / BRACKET MOUNT (SWX-400-2 SERIES)

120° WIDEVIEW COVERAGE

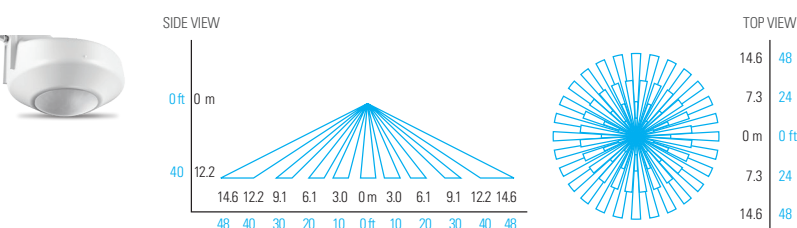


LONG RANGE HALLWAY COVERAGE

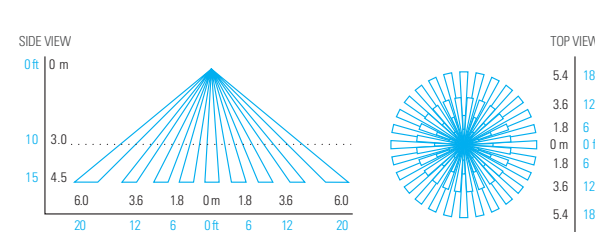


FIXTURE MOUNT (SWX-500 SERIES)

360° HIGH BAY COVERAGE



360° LOW BAY COVERAGE



B SWITCHING VS DIMMING



C DETECTION TYPE



D SEQUENCE OF OPERATION

- Occupancy (Auto On / Auto Off)
- Vacancy (Manual On / Auto Off)
- Partial On (Auto On to Dim % / Auto Off)

MAP YOUR CHOICES TO THE TABLE BELOW TO DETERMINE APPROPRIATE MODEL NUMBER

ENCLOSURE STYLE	COVERAGE PATTERN	B ON/OFF VS DIMMING (0-10V)	C - DETECTION TYPE			D SEQUENCE OF OPERATION	MODEL NUMBER <xx = color>
			PIR	ACOUSTIC	PHOTOCELL		
WALL BOX MOUNT	180° WALL TO WALL	ON/OFF	•		•	Occupancy	SWX-101-xx
			•		•	Occupancy	SWX-111-xx
			•	•	•	Occupancy	SWX-121-xx
			•	•	•	Occupancy	SWX-131-xx
			•		•	Vacancy	SWX-103-xx
			•		•	Vacancy	SWX-113-xx
	ON/OFF & DIMMING	•		•	•	Vacancy	SWX-123-xx
		•		•	•	Vacancy	SWX-133-xx
		•	•		•	Partial On	SWX-101-D-xx
		•	•		•	Partial On	SWX-111-D-xx
		•	•		•	Partial On	SWX-121-D-xx
		•	•		•	Partial On	SWX-131-D-xx
CEILING MOUNT	360° SMALL MOTION	ON/OFF	•		•	Occupancy	SWX-201-2
			•		•	Occupancy	SWX-211-2
		ON/OFF & DIMMING	•	•	•	Occupancy	SWX-221-2
			•	•	•	Occupancy	SWX-231-2
	360° LARGE MOTION	ON/OFF	•		•	Occupancy	SWX-202-2
			•		•	Occupancy	SWX-212-2
		ON/OFF & DIMMING	•	•	•	Occupancy	SWX-222-2
			•	•	•	Occupancy	SWX-232-2
	360° HIGH BAY	ON/OFF	•			Occupancy	SWX-203-2
			•			Occupancy	SWX-213-2
			•			Occupancy	SWX-223-2
			•			Occupancy	SWX-233-2
CORNER / BRACKET MOUNT	120° WIDE VIEW	ON/OFF	•	•		Occupancy	SWX-401-2
	LONG RANGE HALLWAY	ON/OFF	•	•		Occupancy	SWX-421-2
FIXTURE MOUNT	HIGH BAY OR LOW BAY	ON/OFF	•		•	Occupancy	SWX-501
		ON/OFF & DIMMING	•		•	Occupancy	SWX-511
	ON/OFF & DIMMING	•		•	•	Occupancy	SWX-501-HL
		•		•	•	Occupancy	SWX-511-D
			•		Occupancy	SWX-511-NL	

ADDITIONAL OPTIONS

- HE Low Temp / High Humidity Environments
- BK Black Lens & Cover for SWX-200 & SWX-400 Series Sensors (Not Available On Units with Photocells)

WALL SWITCH COLORS
<xx = color>

- WH White
- IV Ivory
- LA Lt. Almond
- GY Gray
- BK Black
- RD Red

ADDITIONAL NON-SENSOR DEVICES

WALL BOX DEVICES	PHOTOCELLS
SWX-864-ELV-xx	Wall Switch & Phase Dimmer & Switch, 120VAC - Reverse Phase for Electronic Low Voltage / LED / CFL / Incandescent / Halogen or Forward Phase, <xx = color>
SWX-823-xx	Wall Switch & Dimmer - Line Voltage, 0-10V, <xx = color>
SWX-821-xx	2 or 3-Way Wall Switch, Line Voltage, <xx = color>
SWX-843-12H-xx	Interval Timer Switch - Line Voltage, 12 Hour Time Scale, <xx = color>
SWX-843-60M-xx	Interval Timer Switch - Line Voltage, 60 Min. Time Scale, <xx = color>
SWX-250-2	On/Off Photo - Ceiling Mount, 120/277 VAC
SWX-250-2-D	Daylight Harvesting & On/Off Photo - Ceiling Mount, 0-10V Dimming, 120/277 VAC



Bid No. 24-18 Addendum #2 - Appendix B
Revised General Construction Bid Form

Name of Prime Bidder

PHILADELPHIA PARKING AUTHORITY
PPA FIT OUT PROJECTS
PARKADE ON 8TH AND SWANSON STREET

Construction Type: General Construction

**SECTION 00 41 00
BID FORM CHECKLIST**

ADDENDUM #2

The following Proposal is hereby made as a "Stipulated Sum Bid No **24-18**" from:

(Bidder)

(Address)

(City, State, Zip)

(Contact Person)(Phone Number) (Email)

SUBMISSION REQUIREMENTS

Items are to be submitted with Bid in the following order:

**Initial each
required
entry**

<input type="checkbox"/>	Bid Form – Fully executed – Section 00 41 00. Twenty Three (23) pages including this cover.	
<input type="checkbox"/>	List of Subcontractors and Material Suppliers – Section 00 43 36	
<input type="checkbox"/>	Schedule for Participation by Small Diverse Businesses (See Section 00 43 40 and Article 19 of the Instructions to Bidders).	
<input type="checkbox"/>	If full compliance for participation with Small Diverse Businesses cannot be attained submit a Request for Waiver / Reduction of Participation Form (See Section 00 43 45 and Article 19 of the Instructions for Bidders)	
<input type="checkbox"/>	Sample Certificate of Insurance or Statement of Insurance indicating that insurance requirements can be met in accordance with Section 00 73 00 - Supplementary Conditions.	
<input type="checkbox"/>	Submission of Bid Security prepared in accordance with Article 13 of the Instructions to Bidders.	
<input type="checkbox"/>	Submission of Consent of Surety for Performance, Labor and Material Payment Bonds in accordance with Article 14 of the Instructions to Bidders.	
<input type="checkbox"/>	Evidence of participating in a State Certified Apprenticeship Program as requested on Bid Form Paragraph 14.16.	
<input type="checkbox"/>	Financial Statements, for the last three (3) years. The Financial Statements shall be attached only to the original copy of the Bid Form or in a separate envelope marked "CONFIDENTIAL".	
<input type="checkbox"/>	List of equipment available to perform proposed work requested on Bid Form Paragraph 14.14.	
<input type="checkbox"/>	Status of any current or ongoing legal actions in accordance with Article 26(A)(17) of the Instructions to Bidders.	

END OF SECTION

BID FORM – CONTRACT 1: GENERAL CONSTRUCTION

00 41 00 - 1
ADDENDUM #2

Bid Issue Date:
07/15/2024

Bid No. 24-18

Name of Prime Bidder

PHILADELPHIA PARKING AUTHORITY
PPA FIT OUT PROJECTS
PARKADE ON 8TH AND SWANSON STREET

Construction Type: General Construction

SECTION 00 41 00
BID FORM

1. The following proposal is hereby made to:

The Philadelphia Parking Authority
Attention: Shannon Stewart, Manager of Contract Administration
701 Market Street, Suite 5400
Philadelphia, PA 19106

2. Stipulated Sum **Bid No. 24-18, TENANT FIT-OUT AT PARKADE ON 8TH STREET GARAGE AND SWANSON STREET OFFICE RENOVATION**

2.1 Base Bid

Pursuant to and in compliance with the Invitation to Bid and the Instruction to Bidders relating thereto, The Undersigned hereby proposes and agrees to furnish all the necessary labor, materials, equipment, facilities, tools and services, excluding building permits and fees, necessary to perform and complete the whole of the General Construction work described in the Contract Documents for **Bid No. 24-18, TENANT FIT-OUT AT PARKADE ON 8TH STREET GARAGE AND SWANSON STREET OFFICE RENOVATION** and all appurtenant work in accordance with the Drawings, Specifications, General and Supplementary Conditions, Special Contract Requirements, and other Contract Documents, and according to any additional explanations that may be furnished by the Philadelphia Parking Authority for the following stipulated amount:

PARKADE ON 8TH Relocation Total Base Bid Dollars (\$ _____)

PARKADE ON 8TH Relocation Amount of Base Bid Written Out:

SWANSON STREET Renovation Total Base Bid Dollars (\$ _____)

SWANSON STREET Renovation Amount of Base Bid Written Out:

Grand Total Base Bid Dollars (\$ _____)

Grand Total Amount of Base Bid Written Out:

2.2 Bid Details

The Contractor shall supply the following bid details for the purpose of evaluating bids and establishing the schedule of values. All values are for materials, labor and equipment unless noted otherwise, and must equal total base bid amounts and grand total amount.

2.2.1 PARKADE ON 8TH Relocation Bid Detail

BID FORM – CONTRACT 1: GENERAL CONSTRUCTION

00 41 00 - 2
ADDENDUM #2

Bid Issue Date:
07/15/2024

Bid No. 24-18

Name of Prime Bidder

PHILADELPHIA PARKING AUTHORITY
PPA FIT OUT PROJECTS
PARKADE ON 8TH AND SWANSON STREET

Construction Type: General Construction

BASE BID

WORK ITEM	DESCRIPTION	LUMP SUM PRICE
		AMOUNT (IN FIGURES)
1	MOBILIZATION AND DEMOBILIZATION	\$
2	GENERAL REQUIREMENTS (excluding permits and fees)	\$
3	SELECTIVE DEMOLITION	\$
4	CONCRETE (Including Approximately 300 SF SOG installation)	\$
5	MASONRY	\$
6	WOOD, PLASTICS, AND COMPOSITES	\$
7	OPENINGS	\$
8	FINISHES	\$
9	SITE UTILITIES	\$

Total Base Bid Amount \$ _____

Name of Prime Bidder

PHILADELPHIA PARKING AUTHORITY
PPA FIT OUT PROJECTS
PARKADE ON 8TH AND SWANSON STREET

Construction Type: General Construction

2.2.2 SWANSON STREET Renovation Bid Detail

BASE BID

WORK ITEM	DESCRIPTION	LUMP SUM PRICE
		AMOUNT (IN FIGURES)
1	MOBILIZATION AND DEMOBILIZATION	\$
2	GENERAL REQUIREMENTS (excluding permits and fees)	\$
3	SELECTIVE DEMOLITION	\$
4	WOOD, PLASTICS, AND COMPOSITES	\$
5	OPENINGS	\$
6	FINISHES	\$

Total Base Bid Amount \$ _____

Name of Prime Bidder _____

PHILADELPHIA PARKING AUTHORITY
PPA FIT OUT PROJECTS
PARKADE ON 8TH AND SWANSON STREET

Construction Type: General Construction

2.3 Unit Prices

Although this is a lump sum bid, the Contractor shall supply unit prices for purpose of potential add/deducts. All unit pricing will be the same cost for both Adds and Deducts.

PARKADE ON 8TH UNIT PRICES			
UNIT ITEM	DESCRIPTION	PRICE PER UNIT	
		AMOUNT	UNITS
1	Concrete SOG Floor Replacement (demolition and installation)	\$	SF
2	Partition Installation Type A (including material and finishes)	\$	LF
3	Partition Installation Type B (including material and finishes)	\$	LF
4	Partition Installation Type C (including material and finishes)	\$	LF
5	Partition Installation Type D (including material and finishes)	\$	LF
6	Partition Installation Type E (including material and finishes)	\$	LF
7	Partition Installation Type F (including material and finishes)	\$	LF
8	Partition Installation Type G (including material and finishes)	\$	LF
9	Carpet Installation (including material)	\$	SF
10	LVT Installation (including material)	\$	SF
11	Acoustic Tile Ceiling Installation (including material)	\$	SF
12	Linear Wood Ceiling Installation (including material)	\$	SF
13	Gypsum Ceiling Installation (including material and finishes)	\$	SF

Name of Prime Bidder

PHILADELPHIA PARKING AUTHORITY
PPA FIT OUT PROJECTS
PARKADE ON 8TH AND SWANSON STREET

Construction Type: General Construction

SWANSON STREET UNIT PRICES			
UNIT ITEM	DESCRIPTION	PRICE PER UNIT	
		AMOUNT	UNITS
1	Partition Installation (including material)	\$	LF
2	Carpet Installation (including material)	\$	SF
3	LVT Installation (including material)	\$	SF
4	Acoustic Tile Ceiling Installation (including material)	\$	SF

Although this is a lump sum bid, the Contractor shall supply unit prices for purpose of potential add/deducts. All unit pricing will be the same cost for both Adds and Deducts.

Name of Prime Bidder

PHILADELPHIA PARKING AUTHORITY
PPA FIT OUT PROJECTS
PARKADE ON 8TH AND SWANSON STREET

Construction Type: General Construction

3. Knowledge of Contract Documents

Bid No. 24-18, TENANT FIT-OUT AT PARKADE ON 8TH STREET GARAGE AND SWANSON STREET OFFICE RENOVATION including Notice to Bidders, Instructions to Bidders, General and Supplementary Conditions of the Contract and Addenda, if any, (hereinafter collectively referred to as the "Bidding Documents") as prepared by the Philadelphia Parking Authority and on file in the office of the Philadelphia Parking Authority at 701 Market Street, Suite 5400, Philadelphia, PA, hereby proposes to complete all work as specified or indicated in the Bidding Documents for the Stipulated Amount and within the Contract Time indicated in this bid.

Authorized Signature

Print Name of Signer

Title of Signer

Date

4. Site Inspection Statement

The Undersigned has visited and examined the site(s) involved for **Bid No. 24-18, TENANT FIT-OUT AT PARKADE ON 8TH STREET GARAGE AND SWANSON STREET OFFICE RENOVATION**, as required in the Instructions to Bidders. As a consequence of this inspection, the undersigned Contractor has knowledge of local conditions and is fully cognizant of the circumstances and conditions that may affect the prosecution and completion of the work and the cost thereof.

The site inspection(s) took place prior to the submission of the bid.

Parkade on 8th Inspection

Swanson Street Inspection

Authorized Signature

Authorized Signature

Print Name of Signer

Print Name of Signer

Title of Signer

Title of Signer

Date of Inspection

Date of Inspection

Name of Prime Bidder

PHILADELPHIA PARKING AUTHORITY
PPA FIT OUT PROJECTS
PARKADE ON 8TH AND SWANSON STREET

Construction Type: General Construction

5. Execution of Agreement and Furnishing Bonds

Within ten (10) calendar days after receipt of written Notice of Award of Contract, the Contractor agrees to execute and deliver the form of Agreement included as one of the Contract Documents, and to furnish a Performance Bond in an amount equal to 100% of the Contract Amount and a Labor and Material Payment Bond in an amount equal to 100% of the Contract Amount.

Authorized Signature

Print Name of Signer

Title of Signer

Date

6. Addenda

The Undersigned hereby acknowledges receipt of the following Addenda:

<u>Addendum No.</u>	<u>Dated</u>	<u>No. of Pages</u>	<u>Signature</u>
_____	_____	_____	_____
_____	_____	_____	_____
_____	_____	_____	_____

7. Contract Time

If awarded the Contract, the Undersigned agrees to complete the entire work sequentially with the Swanson Street Office Renovations being performed first in **Ninety (90) Calendar Days** and the Tenant Fit-Out at Parkade on 8th being performed second in **Two Hundred and Forty (240) Calendar Days** commencing from the date of the Notice to Proceed.

Authorized Signature

Print Name of Signer

Title of Signer

Date

Name of Prime Bidder

PHILADELPHIA PARKING AUTHORITY
PPA FIT OUT PROJECTS
PARKADE ON 8TH AND SWANSON STREET

Construction Type: General Construction

8. Work Conditions

The Undersigned is cognizant of the fact that other contractors may be concurrently performing work in the same areas and that the Undersigned is responsible for providing full and uninterrupted access to other contractors performing work at all times.

Authorized Signature

Print Name of Signer

Title of Signer

Date

9. Submission of Plans and Schedules

Within five (5) days after receipt of written Notice to Proceed, based upon the Undersigned's knowledge and review of the Bidding Documents (as set forth in Paragraph 3) and the Contract Time (as set forth in Paragraph 7), the Undersigned agree to execute and submit to the Philadelphia Parking Authority the following "Plans and Schedules," which shall thereafter constitute Contract Documents:

- 9.1 A Construction Management Plan which should include all phasing, scheduling and submissions of all required documents to allow for timely execution of the Contract per the Owner's overall project documents and milestone schedule and include manpower projection and anticipated schedule of payments for the entire project.
- 9.2 A Detailed Project Schedule which should be a complete Critical Path Method schedule indicating all tasks involved in order to complete the project.
- 9.3 A Quality Control Plan which should designate the Undersigned's Quality Control Manager, who will be responsible for communicating with Philadelphia Parking Authority and its agents with respect to all quality control issues throughout the project. The contractor must submit the Contractor's Quality Control Plan. The plan must include reference to all over site associations referred to in the Contract Documents as they pertain to Quality Control and pertinent Quality Control forms (example: Welding Certificate and Reference Specifications) in order to execute all work as intended in the Bid Documents.

Authorized Signature

Print Name of Signer

Title of Signer

Date

Name of Prime Bidder

PHILADELPHIA PARKING AUTHORITY
PPA FIT OUT PROJECTS
PARKADE ON 8TH AND SWANSON STREET

Construction Type: General Construction

10. Authority's Rights Reserved

The Undersigned understands that the Philadelphia Parking Authority reserves the right to withdraw and cancel this Invitation to Bid prior to opening of bids, to reject any or all bids after bids are opened, or to waive any formality or technicality in any Bid; in the best interest of the Philadelphia Parking Authority. Furthermore, the Philadelphia Parking Authority reserves the right to delete portions of any work and award a contract for the remaining balance of work included in the Contract Documents.

Authorized Signature

Print Name of Signer

Title of Signer

Date

Name of Prime Bidder

Construction Type: General Construction

11. Bid Submission Acknowledgement

The above proposal is hereby respectfully submitted by: **(Complete Section 11.1 or 11.2).**

11.1 If bid is by a corporation, form must include the date and be signed here by (a) President or Vice President, and (b) Secretary, Assistant Secretary, Treasurer, Assistant Treasurer, or Officer. If this form is not so signed, a corporate resolution authorizing form of execution must be attached to this bid.

Signature

Signature

Typed or Printed Name

Typed or Printed Name

Title

Title

Business Name of Bidder

Street Address

Date

City/State/ZIP Code

Telephone Number

11.2 If bid is by a business entity other than a corporation form must be dated and signed here:

Authorized Signature

Business Name of Bidder

Typed or Printed Name

Street Address

Title

City/State/ ZIP Code

Date

Telephone Number

Type of Entity

Name of Prime Bidder

PHILADELPHIA PARKING AUTHORITY
PPA FIT OUT PROJECTS
PARKADE ON 8TH AND SWANSON STREET

Construction Type: General Construction

12. Affidavit of Non-Collusion:

State of: _____ Bid No. _____

County of: _____

I state that I am _____ (Title) of _____ (name of my organization) and that I am authorized to make this affidavit on behalf of my firm, and its owners, directors, members and officers. I am the person responsible in my firm for the price(s) and the amount of this proposal and I have placed my signature below.

I state that:

- (1) The price(s) and amount of this proposal have been arrived at independently and without consultation, communication or agreement with any other contractor, offeror or potential offeror.
- (2) Neither the price(s) nor the amount of this proposal, and neither the terms nor the approximate price(s) nor approximate amount of this proposal, have been disclosed to any other firm or person who is a bidder or potential proposal, and they will not be disclosed before proposal opening.
- (3) No attempt has been made or will be made to induce any firm or person to refrain from submitting a proposal in response to this solicitation, or to submit a proposal higher than this proposal, or to submit any intentionally high or noncompetitive proposal or other form of complementary proposal.
- (4) The proposal of my organization is made in good faith and not pursuant to any agreement or discussion with, or inducement from, any firm or person to submit a complementary or other noncompetitive bid. I have read, understand and will abide by the Authority's Contractor Integrity Provisions.
- (1) _____ (name of my organization) its affiliates, subsidiaries, officers, directors, members and employees are not currently under investigation by any governmental agency and have not in the last four years been convicted or found liable for any act prohibited by State or Federal law in any jurisdiction, involving conspiracy or collusion with respect to bidding on any public contract, except as follows: _____

I state that _____ (name of my organization) understands and acknowledges that the above representations are material and important and will be relied on by The Philadelphia Parking Authority when awarding the contract for which this proposal is submitted. I understand and my organization understands that any misstatement in this affidavit is and shall be treated as fraudulent concealment from The Philadelphia Parking Authority of the true facts relating to the submission of bids for this contract.

Authorized Signature

SWORN TO AND SUBSCRIBED

BEFORE ME THIS _____ DAY
OF _____ 2024.

Notary Public
My Commission Expires: _____

Name of Prime Bidder

PHILADELPHIA PARKING AUTHORITY
PPA FIT OUT PROJECTS
PARKADE ON 8TH AND SWANSON STREET

Construction Type: General Construction

13. Bidder's Statement for Materials

13.1. The undersigned acknowledges furnishing and installing the products specified in the Project Manual for each type of work. The undersigned also acknowledges that his proposal is based on the cost of furnishing and installing the named products specified in the Project Manual and based on all materials to be American products made in the United States.

Authorized Signature

Print Name of Signer

Title of Signer

Date

13.2. The undersigned acknowledges that she/he will use the products listed below which he/she certifies are the equal of the named products specified in the Project Manual by the Owner and which he agrees, in accordance with the provisions of the Instructions to Bidders, will be permitted only if each proposed substitution has been approved in writing by the Owner prior to bid. The Owner reserves the sole right to approve original and verifiable quality control and standards of any and all materials used for this project. The undersigned confirms also that his proposal is based on the cost of furnishing and installing said approved products prior to bid as listed below:

Material: _____

As Manufactured by: _____

Is Proposed as the Equal of: _____

And Has Been Approved by the Owner and the Architect on Addendum No.: _____

Material: _____

As Manufactured by: _____

Is Proposed as the Equal of: _____

And Has Been Approved by the Owner and the Architect on Addendum No.: _____

Material: _____

As Manufactured by: _____

Is Proposed as the Equal of: _____

And Has Been Approved by the Owner and the Architect on Addendum No.: _____

Signature of Owner or Partner

Name and Title of Signer

Name of Firm

Date

Name of Prime Bidder

PHILADELPHIA PARKING AUTHORITY
PPA FIT OUT PROJECTS
PARKADE ON 8TH AND SWANSON STREET

Construction Type: General Construction

14. Bidder Qualification Form

14.1 Legal Name of Firm or Company _____

Street Address _____

City _____ State _____ Zip _____

Phone Number _____ Fax Number _____

Email Address _____ Website _____

Contact Person _____ Mobile Number _____

14.2 Type of Business: **(Check one)**

____ Sole Proprietor

Date Company Started _____

Name of Owner _____

Street Address _____

City _____ State _____ Zip _____

____ Partnership **(Attach list as needed)**

Date of Partnership Agreement _____

Name of Partner _____

Street Address _____

City _____ State _____ Zip _____

Name of Partner _____

Street Address _____

City _____ State _____ Zip _____

____ Limited Liability Company **(Attach list as needed)**

Date of Certificate of Formation _____

Name of Managing Member _____

Street Address _____

City _____ State _____ Zip _____

Name of Prime Bidder

PHILADELPHIA PARKING AUTHORITY
PPA FIT OUT PROJECTS
PARKADE ON 8TH AND SWANSON STREET

Construction Type: General Construction

Name of Member _____

Street Address _____

City _____ State _____ Zip _____

____ Corporation

Date of Incorporation _____ State of Incorporation _____

President _____

Street Address _____

City _____ State _____ Zip _____

Vice President _____

Street Address _____

City _____ State _____ Zip _____

Secretary _____

Street Address _____

City _____ State _____ Zip _____

Treasurer _____

Street Address _____

City _____ State _____ Zip _____

14.3 Federal Tax Identification Number (EIN): _____

14.4 Philadelphia Tax Account Number: _____

14.5 Philadelphia Commercial Activity License Number: _____

14.6 Philadelphia Contractor's Trade License Number: _____

14.7 Number of employees: **(Check one)**

____ Under 25 ____ Under 50 ____ Under 100 ____ Over 100

14.8 Is your company a certified: **(Check all that apply)**

____ MBE ____ WBE ____ DS-DBE ____ OTHER

Certified by: _____

Name of Prime Bidder

PHILADELPHIA PARKING AUTHORITY
PPA FIT OUT PROJECTS
PARKADE ON 8TH AND SWANSON STREET

Construction Type: General Construction

14.9 How many years of experience in this type of construction work does your organization have as a Prime Contractor? _____

14.10 List up to five similar projects your company has completed as a Prime Contractor in the past five years, giving the name of the project, Owner, Architect, contract amount, date of completion and percentage of the cost of the work performed by your own forces. Provide an individual contact person for each project and the email address and telephone number of the individual contact person the Authority may contact as a reference.

Project Name _____

Owner _____

Street Address _____

City _____ State _____ Zip _____

Phone Number _____ Email Address _____

Contact Person _____

Architect _____

Contract Amount \$ _____ Date of Completion _____

Percentage of Cost completed by your own forces _____

Project Name _____

Owner _____

Street Address _____

City _____ State _____ Zip _____

Phone Number _____ Email Address _____

Contact Person _____

Architect _____

Contract Amount \$ _____ Date of Completion _____

Percentage of Cost completed by your own forces _____

Project Name _____

Owner _____

Street Address _____

City _____ State _____ Zip _____

BID FORM – CONTRACT 1: GENERAL CONSTRUCTION

00 41 00 - 16
ADDENDUM #2

Bid Issue Date:
07/15/2024

Bid No. 24-18

Name of Prime Bidder

PHILADELPHIA PARKING AUTHORITY
PPA FIT OUT PROJECTS
PARKADE ON 8TH AND SWANSON STREET

Construction Type: General Construction

Phone Number _____ Email Address _____

Contact Person _____

Architect _____

Contract Amount \$ _____ Date of Completion _____

Percentage of Cost completed by your own forces _____

Project Name _____

Owner _____

Street Address _____

City _____ State _____ Zip _____

Phone Number _____ Email Address _____

Contact Person _____

Architect _____

Contract Amount \$ _____ Date of Completion _____

Percentage of Cost completed by your own forces _____

Project Name _____

Owner _____

Street Address _____

City _____ State _____ Zip _____

Phone Number _____ Email Address _____

Contact Person _____

Architect _____

Contract Amount \$ _____ Date of Completion _____

Percentage of Cost completed by your own forces _____

- 14.11 List up to five similar projects your company has in progress as a Prime Contractor, giving the name of the project, Owner, Architect, contract amount, percentage complete, scheduled completion date

Name of Prime Bidder

PHILADELPHIA PARKING AUTHORITY
PPA FIT OUT PROJECTS
PARKADE ON 8TH AND SWANSON STREET

Construction Type: General Construction

and percentage of the cost of the work performed by your own forces. Provide an individual contact person for each project and the email address and telephone number of the individual contact person the Authority may contact as a reference.

Project Name _____

Owner & Contact Person _____

Street Address _____

City _____ State _____ Zip _____

Email Address _____ Phone Number _____

Architect _____

Contract Amount \$ _____

Percentage Complete _____ Scheduled Date of Completion _____

Percentage of Cost completed by your own forces _____

Project Name _____

Owner & Contact Person _____

Street Address _____

City _____ State _____ Zip _____

Email Address _____ Phone Number _____

Architect _____

Contract Amount \$ _____

Percentage Complete _____ Scheduled Date of Completion _____

Percentage of Cost completed by your own forces _____

Project Name _____

Owner & Contact Person _____

Street Address _____

City _____ State _____ Zip _____

Email Address _____ Phone Number _____

Architect _____

Contract Amount \$ _____

BID FORM – CONTRACT 1: GENERAL CONSTRUCTION

00 41 00 - 18
ADDENDUM #2

Bid Issue Date:
07/15/2024

Bid No. 24-18

Name of Prime Bidder

PHILADELPHIA PARKING AUTHORITY
PPA FIT OUT PROJECTS
PARKADE ON 8TH AND SWANSON STREET

Construction Type: General Construction

Percentage Complete _____ Scheduled Date of Completion _____

Percentage of Cost completed by your own forces _____

Project Name _____

Owner & Contact Person _____

Street Address _____

City _____ State _____ Zip _____

Email Address _____ Phone Number _____

Architect _____

Contract Amount \$ _____

Percentage Complete _____ Scheduled Date of Completion _____

Percentage of Cost completed by your own forces _____

Project Name _____

Owner & Contact Person _____

Street Address _____

City _____ State _____ Zip _____

Email Address _____ Phone Number _____

Architect _____

Contract Amount \$ _____

Percentage Complete _____ Scheduled Date of Completion _____

Percentage of Cost completed by your own forces _____

Name of Prime Bidder

PHILADELPHIA PARKING AUTHORITY
PPA FIT OUT PROJECTS
PARKADE ON 8TH AND SWANSON STREET

Construction Type: General Construction

14.12 List Bank Reference.

Bank Name _____

Street Address _____

City _____ State _____ Zip _____

Phone Number _____ Fax Number _____

Contact Person _____

14.13 List Trade References.

Company Name _____

Street Address _____

City _____ State _____ Zip _____

Phone Number _____ Fax Number _____

Contact Person _____

Company Name _____

Street Address _____

City _____ State _____ Zip _____

Phone Number _____ Fax Number _____

Contact Person _____

Company Name _____

Street Address _____

City _____ State _____ Zip _____

Phone Number _____ Fax Number _____

Contact Person _____

14.14 **On a separate sheet, list the equipment available for the performance of work under the proposed contract.**

Name of Prime Bidder

PHILADELPHIA PARKING AUTHORITY
PPA FIT OUT PROJECTS
PARKADE ON 8TH AND SWANSON STREET

Construction Type: General Construction

14.15 List any Unions that you have agreements with. If none, write "none".

Local Number	Union Name	Agreement Expiration
_____	_____	_____
_____	_____	_____
_____	_____	_____

14.16 Certified Apprenticeship Program Participation

Bidders must be currently participating in an approved Apprenticeship Program which is currently registered with the U.S. Department of Labor or a state apprenticeship agency for each craft or trade that will be engaged in the Work. Bidders shall employ apprentices whose training and employment are in full compliance with the Apprenticeship and Training Act, approved July 14, 1961.

1) Does Bidder participate in an approved Apprenticeship Program which is currently registered with the U.S. Department of Labor or a state apprenticeship agency for each craft or trade that will be engaged in the Work? (Attach appropriate documents evidencing participation and enrollment in Apprenticeship Program[s])

___ Yes ___ No

2) Is Bidder a signatory to a collective bargaining agreement for each craft or trade that will be engaged in the Work? (Attach appropriate documents evidencing the relevant agreement[s])

___ Yes ___ No

If Bidder answered "Yes" to questions 1 or 2, please answer question 3 (including sub-parts) below.

3) Does Bidder, or its labor for each craft or trade, have apprentices and trainees currently participating in said Apprenticeship Program[s]?

___ Yes ___ No

(a) If yes, has Bidder, or its labor for each craft or trade, graduated at least one (1) enrollee in each of the past three (3) years?

___ Yes ___ No

(b) If yes, has Bidder (or its labor for each craft or trade) successfully graduated at least 75% of the program enrollees in each of the past three (3) years*? (Graduation rate is calculated by dividing graduates in a calendar year by the number of enrollees in that year.)

___ Yes ___ No

Name of Prime Bidder

PHILADELPHIA PARKING AUTHORITY
PPA FIT OUT PROJECTS
PARKADE ON 8TH AND SWANSON STREET

Construction Type: General Construction

The Undersigned hereby certifies that it participates, directly or through its labor for each craft or trade, in an approved Apprenticeship Program which is currently registered with the U.S. Department of Labor or a state apprenticeship agency for each craft or trade that will be engaged in the Work; that the attached documentation is true and correct proof of its current participation; and will continue to participate in applicable apprenticeship programs for each craft or trade for the full duration of the Work.

Authorized Signature

Print Name of Signer

Title of Signer

Date

14.17 If "yes" is checked to any of the following questions, applicable within the past five (5) years, please provide a brief summary and details.

- 1) Has your company ever defaulted or been terminated on a contract?
 Yes No
- 2) Has your company ever had a claim made against it for improper, delayed, or non-compliant work or failure to meet warranty obligations?
 Yes No
- 3) Has your company or any of its principals ever petitioned for bankruptcy or failed in business?
 Yes No
- 4) Have any of the Owners, Officers, or Major Stockholders of your company ever been indicted or convicted of any felony or other criminal conduct?
 Yes No
- 5) Has your company ever been banned or otherwise precluded from pursuing public work or have ever been found to be non-responsive by a public agency?
 Yes No
- 6) Is your company or any of its Owners, Officers, or Major Stockholders currently involved in any arbitration or litigation?
 Yes No
- 7) Does your company have any outstanding judgments or claims against it?
 Yes No
- 8) Has any litigation been brought against your company asserting that you failed to make payments to anyone?
 Yes No

Name of Prime Bidder

PHILADELPHIA PARKING AUTHORITY
PPA FIT OUT PROJECTS
PARKADE ON 8TH AND SWANSON STREET

Construction Type: General Construction

15. Financial Statements

15.1 Certified Public Accountant Firm

Company Name _____

Street Address _____

City _____ State _____ Zip _____

Phone Number _____ Fax Number _____

Contact Person _____

15.2 Attach Financial Statements, for the last three (3) years, which have been audited or reviewed by an independent Certified Public Accountant who is not an employee of the Bidder.

Are the attached Financial Statements for the identical organization named on page one of this Bid Form?

____ Yes ____ No

If not, explain the relationship and the financial responsibility of the organization whose Financial Statements are provided (e.g., parent or subsidiary).

END OF SECTION

Bid No. 24-18 Addendum #2 - Appendix C
Revised Plumbing and Fire Protection Bid Form

Name of Prime Bidder

PHILADELPHIA PARKING AUTHORITY
PPA FIT OUT PROJECTS
PARKADE ON 8TH AND SWANSON STREET

Construction Type: P&FP Construction

**SECTION 00 41 00
BID FORM CHECKLIST
ADDENDUM #2**

The following Proposal is hereby made as a "Stipulated Sum Bid No **24-18**" from:

(Bidder)

(Address)

(City, State, Zip)

(Contact Person)(Phone Number) (Email)

SUBMISSION REQUIREMENTS

Items are to be submitted with Bid in the following order:

**Initial each
required
entry**

<input type="checkbox"/>	Bid Form – Fully executed – Section 00 41 00. Twenty Three (23) pages including this cover.	
<input type="checkbox"/>	List of Subcontractors and Material Suppliers – Section 00 43 36	
<input type="checkbox"/>	Schedule for Participation by Small Diverse Businesses (See Section 00 43 40 and Article 19 of the Instructions to Bidders).	
<input type="checkbox"/>	If full compliance for participation with Small Diverse Businesses cannot be attained submit a Request for Waiver / Reduction of Participation Form (See Section 00 43 45 and Article 19 of the Instructions for Bidders)	
<input type="checkbox"/>	Sample Certificate of Insurance or Statement of Insurance indicating that insurance requirements can be met in accordance with Section 00 73 00 - Supplementary Conditions.	
<input type="checkbox"/>	Submission of Bid Security prepared in accordance with Article 13 of the Instructions to Bidders.	
<input type="checkbox"/>	Submission of Consent of Surety for Performance, Labor and Material Payment Bonds in accordance with Article 14 of the Instructions to Bidders.	
<input type="checkbox"/>	Evidence of participating in a State Certified Apprenticeship Program as requested on Bid Form Paragraph 14.16.	
<input type="checkbox"/>	Financial Statements, for the last three (3) years. The Financial Statements shall be attached only to the original copy of the Bid Form or in a separate envelope marked "CONFIDENTIAL".	
<input type="checkbox"/>	List of equipment available to perform proposed work requested on Bid Form Paragraph 14.14.	
<input type="checkbox"/>	Status of any current or ongoing legal actions in accordance with Article 26(A)(17) of the Instructions to Bidders.	

END OF SECTION

BID FORM – CONTRACT 2: PLUMBING AND FIRE PROTECTION
00 41 00 - 0

Bid Issue Date:
07/15/2024

ADDENDUM #2

Bid No. 24-18

Name of Prime Bidder

PHILADELPHIA PARKING AUTHORITY
PPA FIT OUT PROJECTS
PARKADE ON 8TH AND SWANSON STREET

Construction Type: P&FP Construction

**SECTION 00 41 00
BID FORM**

1. The following proposal is hereby made to:

The Philadelphia Parking Authority
Attention: Shannon Stewart, Manager of Contract Administration
701 Market Street, Suite 5400
Philadelphia, PA 19106

2. Stipulated Sum **Bid No. 24-18, TENANT FIT-OUT AT PARKADE ON 8TH STREET GARAGE AND SWANSON STREET OFFICE RENOVATION**

2.1 Base Bid

Pursuant to and in compliance with the Invitation to Bid and the Instruction to Bidders relating thereto, The Undersigned hereby proposes and agrees to furnish all the necessary labor, materials, equipment, facilities, tools and services, excluding building permits and fees, necessary to perform and complete the whole of the Plumbing and Fire Protection Construction work described in the Contract Documents for **Bid No. 24-18, TENANT FIT-OUT AT PARKADE ON 8TH STREET GARAGE AND SWANSON STREET OFFICE RENOVATION**, and all appurtenant work in accordance with the Drawings, Specifications, General and Supplementary Conditions, Special Contract Requirements, and other Contract Documents, and according to any additional explanations that may be furnished by the Philadelphia Parking Authority for the following stipulated amount:

PARKADE ON 8TH Relocation Total Base Bid Dollars (\$ _____)

PARKADE ON 8TH Relocation Amount of Base Bid Written Out:

SWANSON STREET Renovation Total Base Bid Dollars (\$ _____)

SWANSON STREET Renovation Amount of Base Bid Written Out:

Grand Total Base Bid Dollars (\$ _____)

Grand Total Amount of Base Bid Written Out:

2.2 Bid Details

The Contractor shall supply the following bid details for the purpose of evaluating bids and establishing the schedule of values. All values are for materials, labor and equipment unless noted otherwise, and must equal total base bid amounts and grand total amount.

BID FORM – CONTRACT 2: PLUMBING AND FIRE PROTECTION
00 41 00 - 1

Bid Issue Date:
07/15/2024

ADDENDUM #2

Bid No. 24-18

Name of Prime Bidder

PHILADELPHIA PARKING AUTHORITY
PPA FIT OUT PROJECTS
PARKADE ON 8TH AND SWANSON STREET

Construction Type: P&FP Construction

2.2.1 PARKADE ON 8TH Bid Detail

BASE BID

WORK ITEM	DESCRIPTION	LUMP SUM PRICE
		AMOUNT (IN FIGURES)
1	MOBILIZATION AND DEMOBILIZATION	\$
2	GENERAL REQUIREMENTS (excluding permits and fees)	\$
3	SELECTIVE DEMOLITION	\$
4	SPRINKLER SYSTEM DESIGN AND SHOP DRAWINGS (excluding permits and fees)	\$
5	SPRINKLER PIPING AND SPRINKLER HEADS	\$
6	WATER SERVICE RELOCATION AND DOMESTIC WATER PIPING	\$
7	GAS PIPING RELOCATION	\$
8	DRAINAGE, WASTE AND VENT PIPING	\$
9	PLUMBING FIXTURES	\$

Total Base Bid Amount \$ _____

Name of Prime Bidder

PHILADELPHIA PARKING AUTHORITY
PPA FIT OUT PROJECTS
PARKADE ON 8TH AND SWANSON STREET

Construction Type: P&FP Construction

2.2.2 SWANSON STREET Bid Detail

BASE BID

WORK ITEM	DESCRIPTION	LUMP SUM PRICE
		AMOUNT (IN FIGURES)
1	MOBILIZATION AND DEMOBILIZATION	\$
2	GENERAL REQUIREMENTS (excluding permits and fees)	\$
3	SELECTIVE DEMOLITION	\$
4	DOMESTIC WATER PIPING	\$
5	DRAINAGE, WASTE AND VENT PIPING	\$
6	PLUMBING FIXTURES	\$

Total Base Bid Amount \$ _____

Name of Prime Bidder _____

PHILADELPHIA PARKING AUTHORITY
PPA FIT OUT PROJECTS
PARKADE ON 8TH AND SWANSON STREET

Construction Type: P&FP Construction

2.3 Unit Prices

Although this is a lump sum bid, the Contractor shall supply unit prices for purpose of potential add/deducts. All unit pricing will be the same cost for both Adds and Deducts.

PARKADE ON 8TH UNIT PRICES			
UNIT ITEM	DESCRIPTION	PRICE PER UNIT	
		AMOUNT	UNITS
1	4" Black Steel Sprinkler Piping	\$	LF
2	2" Black Steel Sprinkler Piping	\$	LF
3	1" Black Steel Sprinkler Piping	\$	LF
4	Concealed Sprinkler Head	\$	EA
5	Upright Sprinkler Head	\$	EA
6	Floor Drain	\$	EA
7	4" Cast Iron Storm Piping	\$	LF
8	4" Cast Iron Under slab Sanitary Pipe	\$	LF
9	2" Cast Iron Under slab Sanitary Pipe	\$	LF
10	4" Cast Iron Vent Piping	\$	LF
11	2" Cast Iron Vent Piping	\$	LF
12	2" Copper Domestic Water Piping	\$	LF
13	1" Copper Domestic Water Piping	\$	LF
14	3/4" Copper Domestic Water Piping	\$	LF
15	1/2" Copper Domestic Water Piping	\$	LF
16	Floor Cleanout	\$	EA
17	2" Schedule 40 Natural Gas Piping	\$	LF
18	1-1/4" Schedule 40 Natural Gas Piping	\$	LF
19	1" Schedule 40 Natural Gas Piping	\$	LF

Name of Prime Bidder

PHILADELPHIA PARKING AUTHORITY
PPA FIT OUT PROJECTS
PARKADE ON 8TH AND SWANSON STREET

Construction Type: P&FP Construction

SWANSON STREET UNIT PRICES			
UNIT ITEM	DESCRIPTION	PRICE PER UNIT	
		AMOUNT	UNITS
1	Floor Drain	\$	EA
2	2" Copper Domestic Water Piping	\$	LF
3	1" Copper Domestic Water Piping	\$	LF
4	3/4" Copper Domestic Water Piping	\$	LF
5	1/2" Copper Domestic Water Piping	\$	LF

Name of Prime Bidder

PHILADELPHIA PARKING AUTHORITY
PPA FIT OUT PROJECTS
PARKADE ON 8TH AND SWANSON STREET

Construction Type: P&FP Construction

3. Knowledge of Contract Documents

Bid No. 24-18, TENANT FIT-OUT AT PARKADE ON 8TH STREET GARAGE AND SWANSON STREET OFFICE RENOVATION including Notice to Bidders, Instructions to Bidders, General and Supplementary Conditions of the Contract and Addenda, if any, (hereinafter collectively referred to as the "Bidding Documents") as prepared by the Philadelphia Parking Authority and on file in the office of the Philadelphia Parking Authority at 701 Market Street, Suite 5400, Philadelphia, PA, hereby proposes to complete all work as specified or indicated in the Bidding Documents for the Stipulated Amount and within the Contract Time indicated in this bid.

Authorized Signature

Print Name of Signer

Title of Signer

Date

4. Site Inspection Statement

The Undersigned has visited and examined the site(s) involved for **Bid No. 24-18, TENANT FIT-OUT AT PARKADE ON 8TH STREET GARAGE AND SWANSON STREET OFFICE RENOVATION**, as required in the Instructions to Bidders. As a consequence of this inspection, the undersigned Contractor has knowledge of local conditions and is fully cognizant of the circumstances and conditions that may affect the prosecution and completion of the work and the cost thereof.

The site inspection(s) took place prior to the submission of the bid.

Parkade on 8th Inspection

Swanson Street Inspection

Authorized Signature

Authorized Signature

Print Name of Signer

Print Name of Signer

Title of Signer

Title of Signer

Date of Inspection

Date of Inspection

Name of Prime Bidder

Construction Type: P&FP Construction

5. Execution of Agreement and Furnishing Bonds

Within ten (10) calendar days after receipt of written Notice of Award of Contract, the Contractor agrees to execute and deliver the form of Agreement included as one of the Contract Documents, and to furnish a Performance Bond in an amount equal to 100% of the Contract Amount and a Labor and Material Payment Bond in an amount equal to 100% of the Contract Amount.

Authorized Signature

Print Name of Signer

Title of Signer

Date

6. Addenda

The Undersigned hereby acknowledges receipt of the following Addenda:

<u>Addendum No.</u>	<u>Dated</u>	<u>No. of Pages</u>	<u>Signature</u>
_____	_____	_____	_____
_____	_____	_____	_____
_____	_____	_____	_____

7. Contract Time

If awarded the Contract, the Undersigned agrees to complete the entire work sequentially with the Swanson Street Office Renovations being performed first in **Ninety (90) Calendar Days** and the Tenant Fit-Out at Parkade on 8th being performed second in **Two Hundred and Forty (240) Calendar Days** commencing from the date of the Notice to Proceed.

Authorized Signature

Print Name of Signer

Title of Signer

Date

Name of Prime Bidder

PHILADELPHIA PARKING AUTHORITY
PPA FIT OUT PROJECTS
PARKADE ON 8TH AND SWANSON STREET

Construction Type: P&FP Construction

8. Work Conditions

The Undersigned is cognizant of the fact that other contractors may be concurrently performing work in the same areas and that the Undersigned is responsible for providing full and uninterrupted access to other contractors performing work at all times.

Authorized Signature

Print Name of Signer

Title of Signer

Date

9. Submission of Plans and Schedules

Within five (5) days after receipt of written Notice to Proceed, based upon the Undersigned's knowledge and review of the Bidding Documents (as set forth in Paragraph 3) and the Contract Time (as set forth in Paragraph 7), the Undersigned agree to execute and submit to the Philadelphia Parking Authority the following "Plans and Schedules," which shall thereafter constitute Contract Documents:

- 9.1 A Construction Management Plan which should include all phasing, scheduling and submissions of all required documents to allow for timely execution of the Contract per the Owner's overall project documents and milestone schedule and include manpower projection and anticipated schedule of payments for the entire project.
- 9.2 A Detailed Project Schedule which should be a complete Critical Path Method schedule indicating all tasks involved in order to complete the project.
- 9.3 A Quality Control Plan which should designate the Undersigned's Quality Control Manager, who will be responsible for communicating with Philadelphia Parking Authority and its agents with respect to all quality control issues throughout the project. The contractor must submit the Contractor's Quality Control Plan. The plan must include reference to all over site associations referred to in the Contract Documents as they pertain to Quality Control and pertinent Quality Control forms (example: Welding Certificate and Reference Specifications) in order to execute all work as intended in the Bid Documents.
- 9.4 The Undersigned agrees to coordinate all Work start dates with the General Contractor and Owner per the Detailed Project Schedule and the Construction Management Plan per section 9 of this Bid Form.

Authorized Signature

Print Name of Signer

Title of Signer

Date

Name of Prime Bidder

PHILADELPHIA PARKING AUTHORITY
PPA FIT OUT PROJECTS
PARKADE ON 8TH AND SWANSON STREET

Construction Type: P&FP Construction

10. Authority's Rights Reserved

The Undersigned understands that the Philadelphia Parking Authority reserves the right to withdraw and cancel this Invitation to Bid prior to opening of bids, to reject any or all bids after bids are opened, or to waive any formality or technicality in any Bid; in the best interest of the Philadelphia Parking Authority. Furthermore, the Philadelphia Parking Authority reserves the right to delete portions of any work and award a contract for the remaining balance of work included in the Contract Documents.

Authorized Signature

Print Name of Signer

Title of Signer

Date

Name of Prime Bidder

Construction Type: P&FP Construction

11. Bid Submission Acknowledgement

The above proposal is hereby respectfully submitted by: **(Complete Section 11.1 or 11.2).**

11.1 If bid is by a corporation, form must include the date and be signed here by (a) President or Vice President, and (b) Secretary, Assistant Secretary, Treasurer, Assistant Treasurer, or Officer. If this form is not so signed, a corporate resolution authorizing form of execution must be attached to this bid.

Signature

Typed or Printed Name

Title

Business Name of Bidder

Street Address

City/State/ZIP Code

Telephone Number

Signature

Typed or Printed Name

Title

Date

11.2 If bid is by a business entity other than a corporation form must be dated and signed here:

Authorized Signature

Typed or Printed Name

Title

Date

Type of Entity

Business Name of Bidder

Street Address

City/State/ ZIP Code

Telephone Number

Name of Prime Bidder

Construction Type: P&FP Construction

12. Affidavit of Non-Collusion:

State of: _____ Bid No. _____

County of: _____

I state that I am _____ (Title) of _____ (name of my organization) and that I am authorized to make this affidavit on behalf of my firm, and its owners, directors, members and officers. I am the person responsible in my firm for the price(s) and the amount of this proposal and I have placed my signature below.

I state that:

- (1) The price(s) and amount of this proposal have been arrived at independently and without consultation, communication or agreement with any other contractor, offeror or potential offeror.
- (2) Neither the price(s) nor the amount of this proposal, and neither the terms nor the approximate price(s) nor approximate amount of this proposal, have been disclosed to any other firm or person who is a bidder or potential proposal, and they will not be disclosed before proposal opening.
- (3) No attempt has been made or will be made to induce any firm or person to refrain from submitting a proposal in response to this solicitation, or to submit a proposal higher than this proposal, or to submit any intentionally high or noncompetitive proposal or other form of complementary proposal.
- (4) The proposal of my organization is made in good faith and not pursuant to any agreement or discussion with, or inducement from, any firm or person to submit a complementary or other noncompetitive bid. I have read, understand and will abide by the Authority's Contractor Integrity Provisions.
- (1) _____ (name of my organization) its affiliates, subsidiaries, officers, directors, members and employees are not currently under investigation by any governmental agency and have not in the last four years been convicted or found liable for any act prohibited by State or Federal law in any jurisdiction, involving conspiracy or collusion with respect to bidding on any public contract, except as follows: _____

I state that _____ (name of my organization) understands and acknowledges that the above representations are material and important and will be relied on by The Philadelphia Parking Authority when awarding the contract for which this proposal is submitted. I understand and my organization understands that any misstatement in this affidavit is and shall be treated as fraudulent concealment from The Philadelphia Parking Authority of the true facts relating to the submission of bids for this contract.

Authorized Signature

SWORN TO AND SUBSCRIBED

BEFORE ME THIS _____ DAY
OF _____ 2024.

Notary Public
My Commission Expires: _____

Name of Prime Bidder

Construction Type: P&FP Construction

13. Bidder's Statement for Materials

13.1. The undersigned acknowledges furnishing and installing the products specified in the Project Manual for each type of work. The undersigned also acknowledges that his proposal is based on the cost of furnishing and installing the named products specified in the Project Manual and based on all materials to be American products made in the United States.

Authorized Signature

Print Name of Signer

Title of Signer

Date

13.2. The undersigned acknowledges that she/he will use the products listed below which he/she certifies are the equal of the named products specified in the Project Manual by the Owner and which he agrees, in accordance with the provisions of the Instructions to Bidders, will be permitted only if each proposed substitution has been approved in writing by the Owner prior to bid. The Owner reserves the sole right to approve original and verifiable quality control and standards of any and all materials used for this project. The undersigned confirms also that his proposal is based on the cost of furnishing and installing said approved products prior to bid as listed below:

Material: _____
As Manufactured by: _____
Is Proposed as the Equal of: _____
And Has Been Approved by the Owner and the Architect on Addendum No.: _____

Material: _____
As Manufactured by: _____
Is Proposed as the Equal of: _____
And Has Been Approved by the Owner and the Architect on Addendum No.: _____

Material: _____
As Manufactured by: _____
Is Proposed as the Equal of: _____
And Has Been Approved by the Owner and the Architect on Addendum No.: _____

Signature of Owner or Partner

Name and Title of Signer

Name of Firm

Date

Name of Prime Bidder

PHILADELPHIA PARKING AUTHORITY
PPA FIT OUT PROJECTS
PARKADE ON 8TH AND SWANSON STREET

Construction Type: P&FP Construction

14. Bidder Qualification Form

14.1 Legal Name of Firm or Company _____

Street Address _____

City _____ State _____ Zip _____

Phone Number _____ Fax Number _____

Email Address _____ Website _____

Contact Person _____ Mobile Number _____

14.2 Type of Business: **(Check one)**

____ Sole Proprietor

Date Company Started _____

Name of Owner _____

Street Address _____

City _____ State _____ Zip _____

____ Partnership **(Attach list as needed)**

Date of Partnership Agreement _____

Name of Partner _____

Street Address _____

City _____ State _____ Zip _____

Name of Partner _____

Street Address _____

City _____ State _____ Zip _____

____ Limited Liability Company **(Attach list as needed)**

Date of Certificate of Formation _____

Name of Managing Member _____

Street Address _____

City _____ State _____ Zip _____

Name of Member _____

Name of Prime Bidder

PHILADELPHIA PARKING AUTHORITY
PPA FIT OUT PROJECTS
PARKADE ON 8TH AND SWANSON STREET

Construction Type: P&FP Construction

Street Address _____

City _____ State _____ Zip _____

____ Corporation

Date of Incorporation _____ State of Incorporation _____

President _____

Street Address _____

City _____ State _____ Zip _____

Vice President _____

Street Address _____

City _____ State _____ Zip _____

Secretary _____

Street Address _____

City _____ State _____ Zip _____

Treasurer _____

Street Address _____

City _____ State _____ Zip _____

14.3 Federal Tax Identification Number (EIN): _____

14.4 Philadelphia Tax Account Number: _____

14.5 Philadelphia Commercial Activity License Number: _____

14.6 Philadelphia Contractor's Trade License Number: _____

14.7 Number of employees: **(Check one)**

____ Under 25 ____ Under 50 ____ Under 100 ____ Over 100

14.8 Is your company a certified: **(Check all that apply)**

____ MBE ____ WBE ____ DS-DBE ____ OTHER

Certified by: _____

Name of Prime Bidder

PHILADELPHIA PARKING AUTHORITY
PPA FIT OUT PROJECTS
PARKADE ON 8TH AND SWANSON STREET

Construction Type: P&FP Construction

14.9 How many years of experience in this type of construction work does your organization have as a Prime Contractor? _____

14.10 List up to five similar projects your company has completed as a Prime Contractor in the past five years, giving the name of the project, Owner, Architect, contract amount, date of completion and percentage of the cost of the work performed by your own forces. Provide an individual contact person for each project and the email address and telephone number of the individual contact person the Authority may contact as a reference.

Project Name _____

Owner _____

Street Address _____

City _____ State _____ Zip _____

Phone Number _____ Email Address _____

Contact Person _____

Architect _____

Contract Amount \$ _____ Date of Completion _____

Percentage of Cost completed by your own forces _____

Project Name _____

Owner _____

Street Address _____

City _____ State _____ Zip _____

Phone Number _____ Email Address _____

Contact Person _____

Architect _____

Contract Amount \$ _____ Date of Completion _____

Percentage of Cost completed by your own forces _____

Project Name _____

Owner _____

Street Address _____

City _____ State _____ Zip _____

Name of Prime Bidder

PHILADELPHIA PARKING AUTHORITY
PPA FIT OUT PROJECTS
PARKADE ON 8TH AND SWANSON STREET

Construction Type: P&FP Construction

Phone Number _____ Email Address _____

Contact Person _____

Architect _____

Contract Amount \$ _____ Date of Completion _____

Percentage of Cost completed by your own forces _____

Project Name _____

Owner _____

Street Address _____

City _____ State _____ Zip _____

Phone Number _____ Email Address _____

Contact Person _____

Architect _____

Contract Amount \$ _____ Date of Completion _____

Percentage of Cost completed by your own forces _____

Project Name _____

Owner _____

Street Address _____

City _____ State _____ Zip _____

Phone Number _____ Email Address _____

Contact Person _____

Architect _____

Contract Amount \$ _____ Date of Completion _____

Percentage of Cost completed by your own forces _____

Name of Prime Bidder

PHILADELPHIA PARKING AUTHORITY
PPA FIT OUT PROJECTS
PARKADE ON 8TH AND SWANSON STREET

Construction Type: P&FP Construction

- 14.11 List up to five similar projects your company has in progress as a Prime Contractor, giving the name of the project, Owner, Architect, contract amount, percentage complete, scheduled completion date and percentage of the cost of the work performed by your own forces. Provide an individual contact person for each project and the email address and telephone number of the individual contact person the Authority may contact as a reference.

Project Name _____

Owner & Contact Person _____

Street Address _____

City _____ State _____ Zip _____

Email Address _____ Phone Number _____

Architect _____

Contract Amount \$ _____

Percentage Complete _____ Scheduled Date of Completion _____

Percentage of Cost completed by your own forces _____

Project Name _____

Owner & Contact Person _____

Street Address _____

City _____ State _____ Zip _____

Email Address _____ Phone Number _____

Architect _____

Contract Amount \$ _____

Percentage Complete _____ Scheduled Date of Completion _____

Percentage of Cost completed by your own forces _____

Project Name _____

Owner & Contact Person _____

Street Address _____

City _____ State _____ Zip _____

Email Address _____ Phone Number _____

Name of Prime Bidder

PHILADELPHIA PARKING AUTHORITY
PPA FIT OUT PROJECTS
PARKADE ON 8TH AND SWANSON STREET

Construction Type: P&FP Construction

Architect _____

Contract Amount \$ _____

Percentage Complete _____ Scheduled Date of Completion _____

Percentage of Cost completed by your own forces _____

Project Name _____

Owner & Contact Person _____

Street Address _____

City _____ State _____ Zip _____

Email Address _____ Phone Number _____

Architect _____

Contract Amount \$ _____

Percentage Complete _____ Scheduled Date of Completion _____

Percentage of Cost completed by your own forces _____

Project Name _____

Owner & Contact Person _____

Street Address _____

City _____ State _____ Zip _____

Email Address _____ Phone Number _____

Architect _____

Contract Amount \$ _____

Percentage Complete _____ Scheduled Date of Completion _____

Percentage of Cost completed by your own forces _____

Name of Prime Bidder

PHILADELPHIA PARKING AUTHORITY
PPA FIT OUT PROJECTS
PARKADE ON 8TH AND SWANSON STREET

Construction Type: P&FP Construction

14.12 List Bank Reference.

Bank Name _____

Street Address _____

City _____ State _____ Zip _____

Phone Number _____ Fax Number _____

Contact Person _____

14.13 List Trade References.

Company Name _____

Street Address _____

City _____ State _____ Zip _____

Phone Number _____ Fax Number _____

Contact Person _____

Company Name _____

Street Address _____

City _____ State _____ Zip _____

Phone Number _____ Fax Number _____

Contact Person _____

Company Name _____

Street Address _____

City _____ State _____ Zip _____

Phone Number _____ Fax Number _____

Contact Person _____

14.14 **On a separate sheet, list the equipment available for the performance of work under the proposed contract.**

Name of Prime Bidder

PHILADELPHIA PARKING AUTHORITY
PPA FIT OUT PROJECTS
PARKADE ON 8TH AND SWANSON STREET

Construction Type: P&FP Construction

14.15 List any Unions that you have agreements with. If none, write "none".

Local Number	Union Name	Agreement Expiration
_____	_____	_____
_____	_____	_____
_____	_____	_____

14.16 Certified Apprenticeship Program Participation

Bidders must be currently participating in an approved Apprenticeship Program which is currently registered with the U.S. Department of Labor or a state apprenticeship agency for each craft or trade that will be engaged in the Work. Bidders shall employ apprentices whose training and employment are in full compliance with the Apprenticeship and Training Act, approved July 14, 1961.

1) Does Bidder participate in an approved Apprenticeship Program which is currently registered with the U.S. Department of Labor or a state apprenticeship agency for each craft or trade that will be engaged in the Work? (Attach appropriate documents evidencing participation and enrollment in Apprenticeship Program[s])

___ Yes ___ No

2) Is Bidder a signatory to a collective bargaining agreement for each craft or trade that will be engaged in the Work? (Attach appropriate documents evidencing the relevant agreement[s])

___ Yes ___ No

If Bidder answered "Yes" to questions 1 or 2, please answer question 3 (including sub-parts) below.

3) Does Bidder, or its labor for each craft or trade, have apprentices and trainees currently participating in said Apprenticeship Program[s]?

___ Yes ___ No

(a) If yes, has Bidder, or its labor for each craft or trade, graduated at least one (1) enrollee in each of the past three (3) years?

___ Yes ___ No

(b) If yes, has Bidder (or its labor for each craft or trade) successfully graduated at least 75% of the program enrollees in each of the past three (3) years*? (Graduation rate is calculated by dividing graduates in a calendar year by the number of enrollees in that year.)

___ Yes ___ No

Name of Prime Bidder

PHILADELPHIA PARKING AUTHORITY
PPA FIT OUT PROJECTS
PARKADE ON 8TH AND SWANSON STREET

Construction Type: P&FP Construction

The Undersigned hereby certifies that it participates, directly or through its labor for each craft or trade, in an approved Apprenticeship Program which is currently registered with the U.S. Department of Labor or a state apprenticeship agency for each craft or trade that will be engaged in the Work; that the attached documentation is true and correct proof of its current participation; and will continue to participate in applicable apprenticeship programs for each craft or trade for the full duration of the Work.

Authorized Signature

Print Name of Signer

Title of Signer

Date

14.17 If "yes" is checked to any of the following questions, applicable within the past five (5) years, please provide a brief summary and details.

- 1) Has your company ever defaulted or been terminated on a contract?
 Yes No
- 2) Has your company ever had a claim made against it for improper, delayed, or non-compliant work or failure to meet warranty obligations?
 Yes No
- 3) Has your company or any of its principals ever petitioned for bankruptcy or failed in business?
 Yes No
- 4) Have any of the Owners, Officers, or Major Stockholders of your company ever been indicted or convicted of any felony or other criminal conduct?
 Yes No
- 5) Has your company ever been banned or otherwise precluded from pursuing public work or have ever been found to be non-responsive by a public agency?
 Yes No
- 6) Is your company or any of its Owners, Officers, or Major Stockholders currently involved in any arbitration or litigation?
 Yes No
- 7) Does your company have any outstanding judgments or claims against it?
 Yes No
- 8) Has any litigation been brought against your company asserting that you failed to make payments to anyone?
 Yes No

Name of Prime Bidder

Construction Type: P&FP Construction

15. Financial Statements

15.1 Certified Public Accountant Firm

Company Name _____

Street Address _____

City _____ State _____ Zip _____

Phone Number _____ Fax Number _____

Contact Person _____

15.2 Attach Financial Statements, for the last three (3) years, which have been audited or reviewed by an independent Certified Public Accountant who is not an employee of the Bidder.

Are the attached Financial Statements for the identical organization named on page one of this Bid Form?

____ Yes ____ No

If not, explain the relationship and the financial responsibility of the organization whose Financial Statements are provided (e.g., parent or subsidiary).

END OF SECTION

Bid No. 24-18 Addendum #2 - Appendix D
Revised Electrical Bid Form

Name of Prime Bidder

PHILADELPHIA PARKING AUTHORITY
PPA FIT OUT PROJECTS
PARKADE ON 8TH AND SWANSON STREET

Construction Type: ELECTRICAL Construction

**SECTION 00 41 00
BID FORM CHECKLIST
ADDENDUM #2**

The following Proposal is hereby made as a "Stipulated Sum Bid No **24-18**" from:

(Bidder)

(Address)

(City, State, Zip)

(Contact Person)(Phone Number) (Email)

SUBMISSION REQUIREMENTS

Items are to be submitted with Bid in the following order:

**Initial each
required
entry**

<input type="checkbox"/>	Bid Form – Fully executed – Section 00 41 00. Twenty One (21) pages including this cover.	
<input type="checkbox"/>	List of Subcontractors and Material Suppliers – Section 00 43 36	
<input type="checkbox"/>	Schedule for Participation by Small Diverse Businesses (See Section 00 43 40 and Article 19 of the Instructions to Bidders).	
<input type="checkbox"/>	If full compliance for participation with Small Diverse Businesses cannot be attained submit a Request for Waiver / Reduction of Participation Form (See Section 00 43 45 and Article 19 of the Instructions for Bidders)	
<input type="checkbox"/>	Sample Certificate of Insurance or Statement of Insurance indicating that insurance requirements can be met in accordance with Section 00 73 00 - Supplementary Conditions.	
<input type="checkbox"/>	Submission of Bid Security prepared in accordance with Article 13 of the Instructions to Bidders.	
<input type="checkbox"/>	Submission of Consent of Surety for Performance, Labor and Material Payment Bonds in accordance with Article 14 of the Instructions to Bidders.	
<input type="checkbox"/>	Evidence of participating in a State Certified Apprenticeship Program as requested on Bid Form Paragraph 14.16.	
<input type="checkbox"/>	Financial Statements, for the last three (3) years. The Financial Statements shall be attached only to the original copy of the Bid Form or in a separate envelope marked "CONFIDENTIAL".	
<input type="checkbox"/>	List of equipment available to perform proposed work requested on Bid Form Paragraph 14.14.	
<input type="checkbox"/>	Status of any current or ongoing legal actions in accordance with Article 26(A)(17) of the Instructions to Bidders.	

END OF SECTION

Name of Prime Bidder

PHILADELPHIA PARKING AUTHORITY
PPA FIT OUT PROJECTS
PARKADE ON 8TH AND SWANSON STREET

Construction Type: ELECTRICAL Construction

SECTION 00 41 00
BID FORM

1. The following proposal is hereby made to:

The Philadelphia Parking Authority
Attention: Shannon Stewart, Manager of Contract Administration
701 Market Street, Suite 5400
Philadelphia, PA 19106

2. Stipulated Sum **Bid No. 24-18, TENANT FIT-OUT AT PARKADE ON 8TH STREET GARAGE AND SWANSON STREET OFFICE RENOVATION**

2.1 Base Bid

Pursuant to and in compliance with the Invitation to Bid and the Instruction to Bidders relating thereto, The Undersigned hereby proposes and agrees to furnish all the necessary labor, materials, equipment, facilities, tools and services, excluding building permits and fees, necessary to perform and complete the whole of the Electrical Construction work described in the Contract Documents for **Bid No. 24-18, TENANT FIT-OUT AT PARKADE ON 8TH STREET GARAGE AND SWANSON STREET OFFICE RENOVATION**, and all appurtenant work in accordance with the Drawings, Specifications, General and Supplementary Conditions, Special Contract Requirements, and other Contract Documents, and according to any additional explanations that may be furnished by the Philadelphia Parking Authority for the following stipulated amount:

PARKADE ON 8TH Relocation Total Base Bid Dollars (\$ _____)

PARKADE ON 8TH Relocation Amount of Base Bid Written Out:

SWANSON STREET Renovation Total Base Bid Dollars (\$ _____)

SWANSON STREET Renovation Amount of Base Bid Written Out:

Grand Total Base Bid Dollars (\$ _____)

Grand Total Amount of Base Bid Written Out:

2.2 Bid Details

The Contractor shall supply the following bid details for the purpose of evaluating bids and establishing the schedule of values. All values are for materials, labor and equipment unless noted otherwise, and must equal total base bid amounts and grand total amount.

Name of Prime Bidder

PHILADELPHIA PARKING AUTHORITY
PPA FIT OUT PROJECTS
PARKADE ON 8TH AND SWANSON STREET

Construction Type: ELECTRICAL Construction

2.2.1 PARKADE ON 8TH Bid Detail

BASE BID

WORK ITEM	DESCRIPTION	LUMP SUM PRICE
		AMOUNT (IN FIGURES)
1	MOBILIZATION AND DEMOBILIZATION	\$
2	GENERAL REQUIREMENTS (excluding permits and fees)	\$
3	SELECTIVE DEMOLITION	\$
4	POWER FOR CONTINUED BUILDING OPERATION (temporary service and 250 KVA generator power)	\$
5	POWER FOR OTHER TRADES DURING CONSTRUCTION (temporary service and 100KVA generator power)	\$
6	SITE AND UTILITIES	\$
7	LIGHTING AND CONTROLS	\$
8	POWER	\$
9	LOW VOLTAGE SYSTEMS	\$
10	FIRE ALARM (excluding permits and fees)	\$
11	SECURITY SYSTEMS	\$
12	AV/IT SYSTEMS	\$

Total Base Bid Amount

\$ _____

Name of Prime Bidder

PHILADELPHIA PARKING AUTHORITY
PPA FIT OUT PROJECTS
PARKADE ON 8TH AND SWANSON STREET

Construction Type: ELECTRICAL Construction

2.2.1 SWANSON STREET Bid Detail

BASE BID

WORK ITEM	DESCRIPTION	LUMP SUM PRICE
		AMOUNT (IN FIGURES)
1	MOBILIZATION AND DEMOBILIZATION	\$
2	GENERAL REQUIREMENTS (excluding permits and fees)	\$
3	SELECTIVE DEMOLITION	\$
4	LIGHTING AND CONTROLS	\$
5	POWER	\$
6	LOW VOLTAGE SYSTEMS	\$
7	AV/IT SYSTEMS	\$

Total Base Bid Amount \$ _____

Name of Prime Bidder _____

PHILADELPHIA PARKING AUTHORITY
PPA FIT OUT PROJECTS
PARKADE ON 8TH AND SWANSON STREET

Construction Type: ELECTRICAL Construction

2.3 Unit Prices

PARKADE ON 8TH UNIT PRICES			
UNIT ITEM	DESCRIPTION	PRICE PER UNIT	
		AMOUNT	UNITS
1	Buried Conduit - Concrete Floor - 1" PVC	\$	LF
2	Buried Conduit - Concrete Floor - 1 1/4" PVC	\$	LF
3	Buried Conduit - Concrete Floor - 1 1/2" PVC	\$	LF
4	Buried Conduit - Concrete Floor - 2" PVC	\$	LF
5	Buried Conduit - Concrete Floor - 3" PVC	\$	LF
6	Fire Alarm Visual Devices (device, box, raceway and wiring)	\$	EA
7	Fire Alarm AV Devices (device, box, raceway and wiring)	\$	EA
8	Fire Alarm Smoke Detector (device, box, raceway and wiring)	\$	EA
9	Fire Alarm Duct Smoke Detector (device, box, raceway and wiring)	\$	EA
10	Fire Alarm Pull Station (device, box, raceway and wiring)	\$	EA
11	Low Voltage Raceways - 1"	\$	LF
12	Low Voltage Raceways - 1 1/4"	\$	LF
13	Low Voltage Raceways - 1 1/2"	\$	LF
14	Low Voltage Raceways - 2"	\$	LF
15	Low Voltage Raceways - 3"	\$	LF
16	Electric Handholes In Grade	\$	EA
17	250 KVA Generator Rental	\$	DAY
18	Card Reader @ Doors	\$	EA
19	Fire Alarm Panel	\$	EA

Name of Prime Bidder

PHILADELPHIA PARKING AUTHORITY
PPA FIT OUT PROJECTS
PARKADE ON 8TH AND SWANSON STREET

Construction Type: ELECTRICAL Construction

SWANSON STREET UNIT PRICES			
UNIT ITEM	DESCRIPTION	PRICE PER UNIT	
		AMOUNT	UNITS
1	Low Voltage Raceways - 1"	\$	LF
2	Low Voltage Raceways - 1 1/4"	\$	LF
3	Low Voltage Raceways - 1 1/2"	\$	LF
4	Low Voltage Raceways - 2"	\$	LF
5	Low Voltage Raceways - 3"	\$	LF

Although this is a lump sum bid, the Contractor shall supply unit prices for purpose of potential add/deducts. All unit pricing will be the same cost for both Adds and Deducts.

Name of Prime Bidder

PHILADELPHIA PARKING AUTHORITY
PPA FIT OUT PROJECTS
PARKADE ON 8TH AND SWANSON STREET

Construction Type: ELECTRICAL Construction

3. Knowledge of Contract Documents

Bid No. 24-18 TENANT FIT-OUT AT PARKADE ON 8TH STREET GARAGE AND SWANSON STREET OFFICE RENOVATION including Notice to Bidders, Instructions to Bidders, General and Supplementary Conditions of the Contract and Addenda, if any, (hereinafter collectively referred to as the "Bidding Documents") as prepared by the Philadelphia Parking Authority and on file in the office of the Philadelphia Parking Authority at 701 Market Street, Suite 5400, Philadelphia, PA, hereby proposes to complete all work as specified or indicated in the Bidding Documents for the Stipulated Amount and within the Contract Time indicated in this bid.

Authorized Signature

Print Name of Signer

Title of Signer

Date

4. Site Inspection Statement

The Undersigned has visited and examined the site(s) involved for **Bid No. 24-18 TENANT FIT-OUT AT PARKADE ON 8TH STREET GARAGE AND SWANSON STREET OFFICE RENOVATION**, as required in the Instructions to Bidders. As a consequence of this inspection, the undersigned Contractor has knowledge of local conditions and is fully cognizant of the circumstances and conditions that may affect the prosecution and completion of the work and the cost thereof.

The site inspection(s) took place prior to the submission of the bid.

Parkade on 8th Inspection

Swanson Street Inspection

Authorized Signature

Authorized Signature

Print Name of Signer

Print Name of Signer

Title of Signer

Title of Signer

Date of Inspection

Date of Inspection

Name of Prime Bidder

Construction Type: ELECTRICAL Construction

5. Execution of Agreement and Furnishing Bonds

Within ten (10) calendar days after receipt of written Notice of Award of Contract, the Contractor agrees to execute and deliver the form of Agreement included as one of the Contract Documents, and to furnish a Performance Bond in an amount equal to 100% of the Contract Amount and a Labor and Material Payment Bond in an amount equal to 100% of the Contract Amount.

Authorized Signature

Print Name of Signer

Title of Signer

Date

6. Addenda

The Undersigned hereby acknowledges receipt of the following Addenda:

<u>Addendum No.</u>	<u>Dated</u>	<u>No. of Pages</u>	<u>Signature</u>
_____	_____	_____	_____
_____	_____	_____	_____
_____	_____	_____	_____

7. Contract Time

If awarded the Contract, the Undersigned agrees to complete the entire work sequentially with the Swanson Street Office Renovations being performed first in **Ninety (90) Calendar Days** and the Tenant Fit-Out at Parkade on 8th being performed second in **Two Hundred and Forty (240) Calendar Days** commencing from the date of the Notice to Proceed.

Authorized Signature

Print Name of Signer

Title of Signer

Date

Name of Prime Bidder

Construction Type: ELECTRICAL Construction

8. Work Conditions

The Undersigned is cognizant of the fact that other contractors may be concurrently performing work in the same areas and that the Undersigned is responsible for providing full and uninterrupted access to other contractors performing work at all times.

Authorized Signature

Print Name of Signer

Title of Signer

Date

9. Submission of Plans and Schedules

Within five (5) days after receipt of written Notice to Proceed, based upon the Undersigned's knowledge and review of the Bidding Documents (as set forth in Paragraph 3) and the Contract Time (as set forth in Paragraph 7), the Undersigned agree to execute and submit to the Philadelphia Parking Authority the following "Plans and Schedules," which shall thereafter constitute Contract Documents:

- 9.1 A Construction Management Plan which should include all phasing, scheduling and submissions of all required documents to allow for timely execution of the Contract per the Owner's overall project documents and milestone schedule and include manpower projection and anticipated schedule of payments for the entire project.
- 9.2 A Detailed Project Schedule which should be a complete Critical Path Method schedule indicating all tasks involved in order to complete the project.
- 9.3 A Quality Control Plan which should designate the Undersigned's Quality Control Manager, who will be responsible for communicating with Philadelphia Parking Authority and its agents with respect to all quality control issues throughout the project. The contractor must submit the Contractor's Quality Control Plan. The plan must include reference to all over site associations referred to in the Contract Documents as they pertain to Quality Control and pertinent Quality Control forms (example: Welding Certificate and Reference Specifications) in order to execute all work as intended in the Bid Documents.
- 9.4 The Undersigned agrees to coordinate all Work start dates with the General Contractor and Owner per the Detailed Project Schedule and the Construction Management Plan per section 9 of this Bid Form.

Authorized Signature

Print Name of Signer

Title of Signer

Date

Name of Prime Bidder

PHILADELPHIA PARKING AUTHORITY
PPA FIT OUT PROJECTS
PARKADE ON 8TH AND SWANSON STREET

Construction Type: ELECTRICAL Construction

10. Authority's Rights Reserved

The Undersigned understands that the Philadelphia Parking Authority reserves the right to withdraw and cancel this Invitation to Bid prior to opening of bids, to reject any or all bids after bids are opened, or to waive any formality or technicality in any Bid; in the best interest of the Philadelphia Parking Authority. Furthermore, the Philadelphia Parking Authority reserves the right to delete portions of any work and award a contract for the remaining balance of work included in the Contract Documents.

Authorized Signature

Print Name of Signer

Title of Signer

Date

Name of Prime Bidder

Construction Type: ELECTRICAL Construction

11. Bid Submission Acknowledgement

The above proposal is hereby respectfully submitted by: **(Complete Section 11.1 or 11.2).**

11.1 If bid is by a corporation, form must include the date and be signed here by (a) President or Vice President, and (b) Secretary, Assistant Secretary, Treasurer, Assistant Treasurer, or Officer. If this form is not so signed, a corporate resolution authorizing form of execution must be attached to this bid.

Signature

Typed or Printed Name

Title

Business Name of Bidder

Street Address

City/State/ZIP Code

Telephone Number

Signature

Typed or Printed Name

Title

Date

11.2 If bid is by a business entity other than a corporation form must be dated and signed here:

Authorized Signature

Typed or Printed Name

Title

Date

Type of Entity

Business Name of Bidder

Street Address

City/State/ ZIP Code

Telephone Number

Name of Prime Bidder

Construction Type: ELECTRICAL Construction

12. Affidavit of Non-Collusion:

State of: _____ Bid No. _____

County of: _____

I state that I am _____ (Title) of _____ (name of my organization) and that I am authorized to make this affidavit on behalf of my firm, and its owners, directors, members and officers. I am the person responsible in my firm for the price(s) and the amount of this proposal and I have placed my signature below.

I state that:

- (1) The price(s) and amount of this proposal have been arrived at independently and without consultation, communication or agreement with any other contractor, offeror or potential offeror.
 - (2) Neither the price(s) nor the amount of this proposal, and neither the terms nor the approximate price(s) nor approximate amount of this proposal, have been disclosed to any other firm or person who is a bidder or potential proposal, and they will not be disclosed before proposal opening.
 - (3) No attempt has been made or will be made to induce any firm or person to refrain from submitting a proposal in response to this solicitation, or to submit a proposal higher than this proposal, or to submit any intentionally high or noncompetitive proposal or other form of complementary proposal.
 - (4) The proposal of my organization is made in good faith and not pursuant to any agreement or discussion with, or inducement from, any firm or person to submit a complementary or other noncompetitive bid. I have read, understand and will abide by the Authority's Contractor Integrity Provisions.
- (1) _____ (name of my organization) its affiliates, subsidiaries, officers, directors, members and employees are not currently under investigation by any governmental agency and have not in the last four years been convicted or found liable for any act prohibited by State or Federal law in any jurisdiction, involving conspiracy or collusion with respect to bidding on any public contract, except as follows: _____

I state that _____ (name of my organization) understands and acknowledges that the above representations are material and important and will be relied on by The Philadelphia Parking Authority when awarding the contract for which this proposal is submitted. I understand and my organization understands that any misstatement in this affidavit is and shall be treated as fraudulent concealment from The Philadelphia Parking Authority of the true facts relating to the submission of bids for this contract.

Authorized Signature

SWORN TO AND SUBSCRIBED

BEFORE ME THIS _____ DAY
OF _____ 2024.

Notary Public

My Commission Expires: _____

Name of Prime Bidder

Construction Type: ELECTRICAL Construction

13. Bidder's Statement for Materials

13.1. The undersigned acknowledges furnishing and installing the products specified in the Project Manual for each type of work. The undersigned also acknowledges that his proposal is based on the cost of furnishing and installing the named products specified in the Project Manual and based on all materials to be American products made in the United States.

Authorized Signature

Print Name of Signer

Title of Signer

Date

13.2. The undersigned acknowledges that she/he will use the products listed below which he/she certifies are the equal of the named products specified in the Project Manual by the Owner and which he agrees, in accordance with the provisions of the Instructions to Bidders, will be permitted only if each proposed substitution has been approved in writing by the Owner prior to bid. The Owner reserves the sole right to approve original and verifiable quality control and standards of any and all materials used for this project. The undersigned confirms also that his proposal is based on the cost of furnishing and installing said approved products prior to bid as listed below:

Material: _____
As Manufactured by: _____
Is Proposed as the Equal of: _____
And Has Been Approved by the Owner and the Architect on Addendum No.: _____

Material: _____
As Manufactured by: _____
Is Proposed as the Equal of: _____
And Has Been Approved by the Owner and the Architect on Addendum No.: _____

Material: _____
As Manufactured by: _____
Is Proposed as the Equal of: _____
And Has Been Approved by the Owner and the Architect on Addendum No.: _____

Signature of Owner or Partner

Name and Title of Signer

Name of Firm

Date

Name of Prime Bidder

Construction Type: ELECTRICAL Construction

14. Bidder Qualification Form

14.1 Legal Name of Firm or Company _____

Street Address _____

City _____ State _____ Zip _____

Phone Number _____ Fax Number _____

Email Address _____ Website _____

Contact Person _____ Mobile Number _____

14.2 Type of Business: **(Check one)**

____ Sole Proprietor

Date Company Started _____

Name of Owner _____

Street Address _____

City _____ State _____ Zip _____

____ Partnership **(Attach list as needed)**

Date of Partnership Agreement _____

Name of Partner _____

Street Address _____

City _____ State _____ Zip _____

Name of Partner _____

Street Address _____

City _____ State _____ Zip _____

____ Limited Liability Company **(Attach list as needed)**

Date of Certificate of Formation _____

Name of Managing Member _____

Street Address _____

City _____ State _____ Zip _____

Name of Member _____

Name of Prime Bidder

PHILADELPHIA PARKING AUTHORITY
PPA FIT OUT PROJECTS
PARKADE ON 8TH AND SWANSON STREET

Construction Type: ELECTRICAL Construction

Street Address _____

City _____ State _____ Zip _____

____ Corporation

Date of Incorporation _____ State of Incorporation _____

President _____

Street Address _____

City _____ State _____ Zip _____

Vice President _____

Street Address _____

City _____ State _____ Zip _____

Secretary _____

Street Address _____

City _____ State _____ Zip _____

Treasurer _____

Street Address _____

City _____ State _____ Zip _____

14.3 Federal Tax Identification Number (EIN): _____

14.4 Philadelphia Tax Account Number: _____

14.5 Philadelphia Commercial Activity License Number: _____

14.6 Philadelphia Contractor's Trade License Number: _____

14.7 Number of employees: **(Check one)**

____ Under 25 ____ Under 50 ____ Under 100 ____ Over 100

14.8 Is your company a certified: **(Check all that apply)**

____ MBE ____ WBE ____ DS-DBE ____ OTHER

Certified by: _____

Name of Prime Bidder

PHILADELPHIA PARKING AUTHORITY
PPA FIT OUT PROJECTS
PARKADE ON 8TH AND SWANSON STREET

Construction Type: ELECTRICAL Construction

14.9 How many years of experience in this type of construction work does your organization have as a Prime Contractor? _____

14.10 List up to five similar projects your company has completed as a Prime Contractor in the past five years, giving the name of the project, Owner, Architect, contract amount, date of completion and percentage of the cost of the work performed by your own forces. Provide an individual contact person for each project and the email address and telephone number of the individual contact person the Authority may contact as a reference.

Project Name _____

Owner _____

Street Address _____

City _____ State _____ Zip _____

Phone Number _____ Email Address _____

Contact Person _____

Architect _____

Contract Amount \$ _____ Date of Completion _____

Percentage of Cost completed by your own forces _____

Project Name _____

Owner _____

Street Address _____

City _____ State _____ Zip _____

Phone Number _____ Email Address _____

Contact Person _____

Architect _____

Contract Amount \$ _____ Date of Completion _____

Percentage of Cost completed by your own forces _____

Project Name _____

Owner _____

Street Address _____

City _____ State _____ Zip _____

Name of Prime Bidder

PHILADELPHIA PARKING AUTHORITY
PPA FIT OUT PROJECTS
PARKADE ON 8TH AND SWANSON STREET

Construction Type: ELECTRICAL Construction

Phone Number _____ Email Address _____

Contact Person _____

Architect _____

Contract Amount \$ _____ Date of Completion _____

Percentage of Cost completed by your own forces _____

Project Name _____

Owner _____

Street Address _____

City _____ State _____ Zip _____

Phone Number _____ Email Address _____

Contact Person _____

Architect _____

Contract Amount \$ _____ Date of Completion _____

Percentage of Cost completed by your own forces _____

Project Name _____

Owner _____

Street Address _____

City _____ State _____ Zip _____

Phone Number _____ Email Address _____

Contact Person _____

Architect _____

Contract Amount \$ _____ Date of Completion _____

Percentage of Cost completed by your own forces _____

Name of Prime Bidder

PHILADELPHIA PARKING AUTHORITY
PPA FIT OUT PROJECTS
PARKADE ON 8TH AND SWANSON STREET

Construction Type: ELECTRICAL Construction

- 14.11 List up to five similar projects your company has in progress as a Prime Contractor, giving the name of the project, Owner, Architect, contract amount, percentage complete, scheduled completion date and percentage of the cost of the work performed by your own forces. Provide an individual contact person for each project and the email address and telephone number of the individual contact person the Authority may contact as a reference.

Project Name _____

Owner & Contact Person _____

Street Address _____

City _____ State _____ Zip _____

Email Address _____ Phone Number _____

Architect _____

Contract Amount \$ _____

Percentage Complete _____ Scheduled Date of Completion _____

Percentage of Cost completed by your own forces _____

Project Name _____

Owner & Contact Person _____

Street Address _____

City _____ State _____ Zip _____

Email Address _____ Phone Number _____

Architect _____

Contract Amount \$ _____

Percentage Complete _____ Scheduled Date of Completion _____

Percentage of Cost completed by your own forces _____

Project Name _____

Owner & Contact Person _____

Street Address _____

City _____ State _____ Zip _____

Email Address _____ Phone Number _____

Name of Prime Bidder

PHILADELPHIA PARKING AUTHORITY
PPA FIT OUT PROJECTS
PARKADE ON 8TH AND SWANSON STREET

Construction Type: ELECTRICAL Construction

Architect _____

Contract Amount \$ _____

Percentage Complete _____ Scheduled Date of Completion _____

Percentage of Cost completed by your own forces _____

Project Name _____

Owner & Contact Person _____

Street Address _____

City _____ State _____ Zip _____

Email Address _____ Phone Number _____

Architect _____

Contract Amount \$ _____

Percentage Complete _____ Scheduled Date of Completion _____

Percentage of Cost completed by your own forces _____

Project Name _____

Owner & Contact Person _____

Street Address _____

City _____ State _____ Zip _____

Email Address _____ Phone Number _____

Architect _____

Contract Amount \$ _____

Percentage Complete _____ Scheduled Date of Completion _____

Percentage of Cost completed by your own forces _____

Name of Prime Bidder

PHILADELPHIA PARKING AUTHORITY
PPA FIT OUT PROJECTS
PARKADE ON 8TH AND SWANSON STREET

Construction Type: ELECTRICAL Construction

14.12 List Bank Reference.

Bank Name _____

Street Address _____

City _____ State _____ Zip _____

Phone Number _____ Fax Number _____

Contact Person _____

14.13 List Trade References.

Company Name _____

Street Address _____

City _____ State _____ Zip _____

Phone Number _____ Fax Number _____

Contact Person _____

Company Name _____

Street Address _____

City _____ State _____ Zip _____

Phone Number _____ Fax Number _____

Contact Person _____

Company Name _____

Street Address _____

City _____ State _____ Zip _____

Phone Number _____ Fax Number _____

Contact Person _____

14.14 **On a separate sheet, list the equipment available for the performance of work under the proposed contract.**

Name of Prime Bidder

PHILADELPHIA PARKING AUTHORITY
PPA FIT OUT PROJECTS
PARKADE ON 8TH AND SWANSON STREET

Construction Type: ELECTRICAL Construction

14.15 List any Unions that you have agreements with. If none, write "none".

Local Number	Union Name	Agreement Expiration
_____	_____	_____
_____	_____	_____
_____	_____	_____

14.16 Certified Apprenticeship Program Participation

Bidders must be currently participating in an approved Apprenticeship Program which is currently registered with the U.S. Department of Labor or a state apprenticeship agency for each craft or trade that will be engaged in the Work. Bidders shall employ apprentices whose training and employment are in full compliance with the Apprenticeship and Training Act, approved July 14, 1961.

1) Does Bidder participate in an approved Apprenticeship Program which is currently registered with the U.S. Department of Labor or a state apprenticeship agency for each craft or trade that will be engaged in the Work? (Attach appropriate documents evidencing participation and enrollment in Apprenticeship Program[s])

___ Yes ___ No

2) Is Bidder a signatory to a collective bargaining agreement for each craft or trade that will be engaged in the Work? (Attach appropriate documents evidencing the relevant agreement[s])

___ Yes ___ No

If Bidder answered "Yes" to questions 1 or 2, please answer question 3 (including sub-parts) below.

3) Does Bidder, or its labor for each craft or trade, have apprentices and trainees currently participating in said Apprenticeship Program[s]?

___ Yes ___ No

(a) If yes, has Bidder, or its labor for each craft or trade, graduated at least one (1) enrollee in each of the past three (3) years?

___ Yes ___ No

(b) If yes, has Bidder (or its labor for each craft or trade) successfully graduated at least 75% of the program enrollees in each of the past three (3) years*? (Graduation rate is calculated by dividing graduates in a calendar year by the number of enrollees in that year.)

___ Yes ___ No

Name of Prime Bidder

PHILADELPHIA PARKING AUTHORITY
PPA FIT OUT PROJECTS
PARKADE ON 8TH AND SWANSON STREET

Construction Type: ELECTRICAL Construction

The Undersigned hereby certifies that it participates, directly or through its labor for each craft or trade, in an approved Apprenticeship Program which is currently registered with the U.S. Department of Labor or a state apprenticeship agency for each craft or trade that will be engaged in the Work; that the attached documentation is true and correct proof of its current participation; and will continue to participate in applicable apprenticeship programs for each craft or trade for the full duration of the Work.

Authorized Signature

Print Name of Signer

Title of Signer

Date

14.17 If "yes" is checked to any of the following questions, applicable within the past five (5) years, please provide a brief summary and details.

- 1) Has your company ever defaulted or been terminated on a contract?
 Yes No
- 2) Has your company ever had a claim made against it for improper, delayed, or non-compliant work or failure to meet warranty obligations?
 Yes No
- 3) Has your company or any of its principals ever petitioned for bankruptcy or failed in business?
 Yes No
- 4) Have any of the Owners, Officers, or Major Stockholders of your company ever been indicted or convicted of any felony or other criminal conduct?
 Yes No
- 5) Has your company ever been banned or otherwise precluded from pursuing public work or have ever been found to be non-responsive by a public agency?
 Yes No
- 6) Is your company or any of its Owners, Officers, or Major Stockholders currently involved in any arbitration or litigation?
 Yes No
- 7) Does your company have any outstanding judgments or claims against it?
 Yes No
- 8) Has any litigation been brought against your company asserting that you failed to make payments to anyone?
 Yes No

Name of Prime Bidder

Construction Type: ELECTRICAL Construction

15. Financial Statements

15.1 Certified Public Accountant Firm

Company Name _____

Street Address _____

City _____ State _____ Zip _____

Phone Number _____ Fax Number _____

Contact Person _____

15.2 Attach Financial Statements, for the last three (3) years, which have been audited or reviewed by an independent Certified Public Accountant who is not an employee of the Bidder.

Are the attached Financial Statements for the identical organization named on page one of this Bid Form?

____ Yes ____ No

If not, explain the relationship and the financial responsibility of the organization whose Financial Statements are provided (e.g., parent or subsidiary).

END OF SECTION

Bid No. 24-18 Addendum #2 - Appendix E

Revised 01 12 00

SECTION 01 12 00
MULTIPLE CONTRACT SUMMARY
ADDENDUM #2

PART 1 - GENERAL

1.1 RELATED DOCUMENTS

- A. Drawings and general provisions of the Contract, including General and Supplementary Conditions and other Division 01 Specification Sections, apply to this Section.

1.2 SUMMARY

- A. Section includes a summary of each contract, including responsibilities for coordination and temporary facilities and controls.
- B. Specific requirements for Work of each contract are also indicated in individual Specification Sections and on Drawings.
- C. Related Requirements:
 - 1. Section 011000 "Summary" for the Work covered by the Contract Documents, restrictions on use of Project site, coordination with occupants, and work restrictions.
 - 2. Section 013100 "Project Management and Coordination" for general coordination requirements.

1.3 PROJECT COORDINATOR

- A. Project Coordinator shall be responsible for coordination between the General Construction Contract, the Plumbing/Fire Protection Contract, the HVAC Contract, and the Electrical Contract.
 - 1. The General Construction Prime Contractor shall act as the Project Coordinator for this project.
- B. Scheduling Consultant: Owner has retained the following scheduling consultant to coordinate the scheduling activities of the multiple contracts, to prepare overall Project schedule, and to monitor and update Project schedule periodically; each Contractor shall cooperate with and coordinate its scheduling activities with Owner's scheduling consultant: The Construction Manager.

1.4 PROJECT COORDINATOR RESPONSIBILITIES

- A. Project coordinator shall perform Project coordination activities for the multiple contracts, including, but not limited to, the following:
 - 1. Identify at initial Pre-Construction Conference any work that is required for the completion of the project that has not been included in the Multiple Contracts.
 - 2. Provide typical overall coordination of the Work.

3. Coordinate shared access to workspaces.
4. Coordinate product selections for compatibility.
5. Provide overall coordination of temporary facilities and controls.
6. Coordinate, schedule, and approve interruptions of permanent and temporary utilities, including those necessary to make connections for temporary services.
7. Coordinate construction and operations of the Work with work performed by each Contract
8. Prepare coordination drawings in collaboration with each contractor to coordinate work by more than one contract.
9. Coordinate sequencing and scheduling of the Work. Include the following:
 - a. Initial Coordination Meeting: At earliest possible date, arrange and conduct a meeting with contractors for sequencing and coordinating the Work; negotiate reasonable adjustments to schedules.
 - b. Provide combined Contractor's Construction Schedule for entire Project in coordination with Owner's Scheduling Consultant. Base schedule on preliminary construction schedule. Secure time commitments for performing critical construction activities from contractors. Show activities of each contract on a separate sheet. Prepare a simplified summary sheet indicating combined construction activities for contracts.
 - 1) Submit schedules for approval.
 - 2) Distribute copies of approved schedules to contractors.
10. Provide photographic documentation.
11. Provide quality assurance and quality control services per Section 014000.
12. Coordinate sequence of activities to accommodate tests and inspections, and coordinate schedule of tests and inspections.
13. Provide information necessary to adjust, move, or relocate existing utility structures affected by construction.
14. Provide progress cleaning of common areas and coordinate progress cleaning of areas or pieces of equipment where more than one contractor has worked.
15. Coordinate cutting and patching.
16. Coordinate protection of the Work.
17. Coordinate completion of interrelated punch list items.
18. Coordinate preparation of Project Record Documents if information from more than one contractor is to be integrated with information from other contractors to form one combined record.
19. Print and submit Record Documents if installations by more than one contractor are indicated on the same Contract Drawing or Shop Drawing.
20. Collect record Specification Sections from contractors, collate Sections into numeric order, and submit complete set.
21. Coordinate preparation of operation and maintenance manuals if information from more than one contractor is to be integrated with information from other contractors to form one combined record.

1.5 GENERAL REQUIREMENTS OF CONTRACTS

- A. Extent of Contract: Unless the Agreement contains a more specific description of the Work of each Contract, requirements indicated on Drawings and in Specification Sections determine which contract includes a specific element of Project.
 1. Unless otherwise indicated, the work described in this Section for each contract shall be complete systems and assemblies, including products, components, accessories, and installation required by the Contract Documents.

MULTIPLE CONTRACT SUMMARY

01 12 00 - 2
ADDENDUM #2

2. Trenches and other excavation for the work of each contract shall be the work of the General Construction Contract.
 3. Blocking, backing panels, sleeves, and metal fabrication supports for the work of each contract shall be the work of the General Construction Contract.
 4. Furnishing of access panels for the work of each contract shall be the work of each contract for its own work. Installation of access panels shall be the work of the General Construction Contract.
 5. Cast in place concrete or equipment pads for the work of each contract shall be the work of the General Construction Contract
 6. Painting for the work of each contract shall be the work of the General Construction Contract
 7. Cutting and Patching: Provided by the General Construction Contract.
 8. Through-penetration firestopping for the work of each contract shall be provided by the General Construction Contract.
 9. Contractors' Startup Construction Schedule: Within five working days after startup, and horizontal bar-chart-type construction schedule submittal has been received from Project Coordinator, submit a matching startup horizontal bar-chart schedule showing construction operations sequenced and coordinated with overall construction.
- B. Substitutions: Each contractor shall cooperate with other contractors involved to coordinate approved substitutions with remainder of the work.
1. Project coordinator shall coordinate substitutions.
- C. Temporary Facilities and Controls: In addition to specific responsibilities for temporary facilities and controls indicated in this Section and in Section 015000 "Temporary Facilities and Controls," each contractor is responsible for the following:
1. Installation, operation, maintenance, and removal of each temporary facility necessary for its own normal construction activity, and costs and use charges associated with each facility, except as otherwise provided for in this Section.
 2. Plug-in electric power cords and extension cords, supplementary plug-in task lighting, and special lighting necessary exclusively for its own activities.
 3. Its own storage and fabrication sheds.
 4. Temporary enclosures for its own construction activities.
 5. Staging and scaffolding for its own construction activities.
 6. General hoisting facilities for its own construction activities, up to 2 tons (2000 kg).
 7. Waste disposal facilities, including collection and legal disposal of its own hazardous, dangerous, unsanitary, or other harmful waste materials.
 8. Progress cleaning of work areas affected by its operations on a daily basis.
 9. Secure lockup of its own tools, materials, and equipment.
 10. Construction aids and miscellaneous services and facilities necessary exclusively for its own construction activities,

1.6 CONTRACT 1: GENERAL CONSTRUCTION CONTRACT

- A. Work of the General Construction Contract includes, but is not limited to, the following:
1. Remaining work not identified as work under other contracts.
 2. Site preparation, including clearing, building demolition and relocations, and earthwork.
 3. Selective demolition.
 4. Slabs-on-grade, including earthwork, subdrainage systems, and insulation.
 5. Interior construction, including partitions, doors, interior glazed openings, and fittings.
 6. Interior finishes, finish carpentry, architectural woodwork, interior specialties, and floor and ceiling finishes.
 7. Miscellaneous items, including painting of mechanical and electrical work.

MULTIPLE CONTRACT SUMMARY

01 12 00 - 3

ADDENDUM #2

8. Equipment, including the following:
 - a. Residential appliances.
 - b. Toilet accessories.
 9. Casework, window treatments, floor grilles and mats, metal lockers, and fixed bench type seating.
 10. Special construction, including the following:
 - a. Special-purpose rooms for training and roll call.
- B. Temporary facilities and controls in the General Construction Contract include, but are not limited to, the following:
1. Temporary facilities and controls that are not otherwise specifically assigned to the Plumbing & Fire Protection Contract, HVAC Contract, and Electrical Contract.
 2. Sediment and erosion control.
 3. Unpiped temporary toilet fixtures, wash facilities, and drinking water facilities, including disposable supplies.
 4. Special or unusual hoisting requirements for construction activities, including hoisting loads in excess of 2 tons (2000 kg) and hoisting requirements outside building enclosure.
 5. Excavation support and protection, unless required solely for the Work of another contract.
 6. Project identification and temporary signs.
 7. General waste disposal facilities.
 8. Pest control.
 9. Temporary fire-protection facilities.
 10. Barricades, warning signs, and lights.
 11. Security enclosure and lockup.
 12. Environmental protection.
 13. Maintenance and restoration of Owner's existing facilities used as temporary facilities.

1.7 CONTRACT 2: PLUMBING & FIRE PROTECTION CONTRACT

- A. Work of the Plumbing Contract includes, but is not limited to, the following:
1. Plumbing fixtures.
 2. Domestic water distribution.
 3. Sanitary waste.
 4. Stormwater drainage.
 5. Special plumbing systems including natural gas.
 6. Fire-suppression systems.
 7. Plumbing connections to equipment furnished by the General Construction Contract Plumbing & Fire Protection Contract HVAC Contract and Electrical Contract.
- B. Work in the Prime Contract 2: Plumbing & Fire Protection includes, but is not limited to, the work included in each of the following Drawings:
1. All Prefix G Drawings.
 2. All Prefix P Drawings.
 3. All Prefix FS Drawings.
 4. As pertains to Prefix A Drawings.
 5. As pertains to Prefix M Drawings.
 6. As pertains to Prefix E Drawings.
 7. As pertains to Prefix FA Drawings.
 8. All references to other drawings from drawings listed above.
- C. Work in the Prime Contract 2: Plumbing & Fire Protection includes, but is not limited to, the work included in each of the following Specifications:
1. Specifications as identified on drawing sheets.

MULTIPLE CONTRACT SUMMARY

01 12 00 - 4

ADDENDUM #2

1.8 CONTRACT 3: HVAC CONTRACT

- A. Work of the HVAC Contract includes, but is not limited to, the following:
1. Energy supply, including gas supply systems.
 2. HVAC systems and equipment.
 3. HVAC instrumentation and controls.
 4. HVAC testing, adjusting, and balancing.
 5. Mechanical connections to equipment furnished by the General Construction Contract, Plumbing & Fire Protection Contract, HVAC Contract, and Electrical Contract.
- B. Work in the Prime Contract 3: HVAC includes, but is not limited to, the work included in each of the following Drawings:
1. All Prefix G Drawings.
 2. All Prefix M Drawings.
 3. As pertains to Prefix A Drawings.
 4. As pertains to Prefix P Drawings.
 5. As pertains to Prefix FA Drawings.
 6. As pertains to Prefix FS Drawings.
 7. As pertains to Prefix E Drawings.
 8. All references to other drawings from drawings listed above.
- C. Work in the Prime Contract 3: HVAC includes, but is not limited to, the work included in each of the following Specifications:
1. Specifications as identified on drawing sheets.

1.9 CONTRACT 4: ELECTRICAL CONTRACT

- A. Work of the Electrical Contract includes, but is not limited to, the following:
1. Connections to and controls of Site lighting, and connections to and controls of exterior wall mounted illuminated signage.
 2. Electrical service and distribution.
 3. Exterior and interior lighting.
 4. Communication, Security, and Addressable Fire Alarm System.
 5. Special electrical systems, including the following:
 6. Uninterruptible power supply systems.
 7. Electrical connections to equipment furnished by the General Construction Contract, Plumbing Contract, HVAC Contract, and Electrical Contract.
- B. Temporary facilities and controls in the Electrical Contract include, but are not limited to, the following:
1. Electric power service and distribution.
 2. Lighting, including site lighting.
 3. Electrical connections to existing systems and temporary facilities and controls furnished by the General Construction Contract, Plumbing & Fire Protection Contract, HVAC Contract, and Electrical Contract.
- C. Work in the Prime Contract 4: Electrical includes, but is not limited to, the work included in each of the following Drawings:
1. All Prefix G Drawings.
 2. All Prefix E Drawings.
 3. All Prefix FA Drawings.

MULTIPLE CONTRACT SUMMARY

01 12 00 - 5
ADDENDUM #2

O&S ASSOCIATES, INC.

PHILADELPHIA PARKING AUTHORITY
PPA FIT OUT PROJECTS
PARKADE ON 8TH AND SWANSON STREET

4. As pertains to Prefix A Drawings.
5. As pertains to Prefix P Drawings.
6. As pertains to Prefix FS Drawings.
7. As pertains to Prefix M Drawings.
8. All references to other drawings from drawings listed above.

- D. Work in the Prime Contract 4: Electrical includes, but is not limited to, the work included in each of the following Specifications:
1. Specifications as identified on drawing sheets.

PART 2 - PRODUCTS (Not Used)

PART 3 - EXECUTION (Not Used)

END OF SECTION

MULTIPLE CONTRACT SUMMARY

01 12 00 - 6
ADDENDUM #2

Bid Issue Date:
07/15/2024

Bid No. 24-18

Bid No. 24-17 Addendum #4 - Appendix F

Revised - 01 50 00

SECTION 015000
TEMPORARY FACILITIES AND CONTROLS
ADDENDUM #2

PART 1 - GENERAL

1.1 RELATED DOCUMENTS

- A. Drawings and general provisions of the Contract, including General and Supplementary Conditions and other Division 01 Specification Sections, apply to this Section.

1.2 SUMMARY

- A. Section includes requirements for temporary utilities, support facilities, and security and protection facilities.

1.3 USE CHARGES

- A. Water and Sewer Service from Existing System: Water from Owner's existing water system is available for use without metering and without payment of use charges. Provide connections and extensions of services as required for construction operations.
- B. Electric Power Service from Existing System: Electric power from Owner's existing system is available for use without metering and without payment of use charges. Provide connections and extensions of services as required for construction operations.

1.4 INFORMATIONAL SUBMITTALS

- A. Site Plan: Show temporary facilities, utility hookups, staging areas, and parking areas for construction personnel.
- B. Dust-Control Plan: Submit coordination drawing and narrative that indicates the dust-control measures proposed for use, proposed locations, and proposed time frame for their operation. Identify further options if proposed measures are later determined to be inadequate. Include the following:
 - 1. Locations of dust-control partitions at each phase of the work.
 - 2. Other dust-control measures.
 - 3. Waste management plan.

1.5 QUALITY ASSURANCE

- A. Electric Service: Comply with NECA, NEMA, and UL standards and regulations for temporary electric service. Install service to comply with NFPA 70.
- B. Tests and Inspections: Arrange for authorities having jurisdiction to test and inspect each temporary utility before use. Obtain required certifications and permits.

PART 2 - PRODUCTS

2.1 MATERIALS

- A. Site Fencing: Provide minimum six-foot-tall chain link fencing to fully enclose work area with lockable gates in compliance with all code requirements.
- B. Jersey Barriers: Provide 42" tall, interlocked water filled Jersey Barriers, orange or yellow, to delineate all traffic lanes required for construction.
- C. Polyethylene Sheet: Reinforced, fire-resistive sheet, 10 mils (0.25 mm) minimum thickness, with flame-spread rating of 15 or less per ASTM E 84.
- D. Dust Control Adhesive-Surface Walk-off Mats: Provide mats minimum 36 by 60 inches (914 by 1624 mm).

2.2 TEMPORARY FACILITIES

- A. Common-Use Field Meeting Space: Identified location on site of sufficient size to accommodate needs of Owner, Architect, and construction personnel office activities and to accommodate

TEMPORARY FACILITIES AND CONTROLS

01 50 00 - 1

project meetings specified in other Division 01 Sections. Keep space clean and orderly. Furnish and equip offices as follows:

1. Furniture required for Project-site documents including file cabinets, plan tables, plan racks, and bookcases.

2.1 EQUIPMENT

- A. **Fire Extinguishers: Portable, UL rated; with class and extinguishing agent as required by locations and classes of fire exposures.**
- B. **HVAC Equipment: Unless Owner authorizes use of permanent HVAC system, provide vented, self-contained, liquid-propane-gas or fuel-oil heaters with individual space thermostatic control.**
 1. **Use of gasoline-burning space heaters, open-flame heaters, or salamander-type heating units is prohibited.**
 2. **Heating Units: Listed and labeled for type of fuel being consumed, by a qualified testing agency acceptable to authorities having jurisdiction and marked for intended location and application.**

PART 3 - EXECUTION

3.1 INSTALLATION, GENERAL

- A. Locate facilities where they will serve Project adequately and result in minimum interference with performance of the Work. Relocate and modify facilities as required by progress of the Work.
- B. Provide each facility ready for use when needed to avoid delay. Do not remove until facilities are no longer needed or are replaced by authorized use of completed permanent facilities.

3.2 TEMPORARY UTILITY INSTALLATION

- A. **Sanitary Facilities:** Provide temporary toilets, wash facilities, and drinking water for use of construction personnel. Comply with requirements of authorities having jurisdiction for type, number, location, operation, and maintenance of fixtures and facilities.
- B. **Heating and Cooling:** Provide temporary heating and cooling required by construction activities for curing or drying of completed installations or for protecting installed construction from adverse effects of low temperatures or high humidity. Select equipment that will not have a harmful effect on completed installations or elements being installed.
- C. **Isolation of Work Areas in Occupied Facilities:** Prevent dust, fumes, and odors from entering occupied areas.
 1. Prior to commencing work, isolate the HVAC system in area where work is to be performed in accordance with approved coordination drawings.
 - a. Disconnect supply and return ductwork in work area from HVAC systems servicing occupied areas.
 - b. Maintain negative air pressure within work area using HEPA-equipped air filtration units, starting with commencement of temporary partition construction, and continuing until removal of temporary partitions is complete.
 2. Maintain dust partitions during the Work. Use vacuum collection attachments on dust-producing equipment. Isolate limited work within occupied areas using portable dust containment devices.
 3. Perform daily construction cleanup and final cleanup using approved, HEPA-filter-equipped vacuum equipment.
- D. **Ventilation and Humidity Control:** Provide temporary ventilation required by construction activities for curing or drying of completed installations or for protecting installed construction from adverse effects of high humidity. Select equipment that will not have a harmful effect on completed installations or elements being installed. Coordinate ventilation requirements to produce ambient condition required and minimize energy consumption.

TEMPORARY FACILITIES AND CONTROLS

01 50 00 - 2

- E. Lighting: Provide temporary lighting with local switching that provides adequate illumination for construction operations, observations, inspections, and traffic conditions.
 1. Install and operate temporary lighting that fulfills security and protection requirements without operating entire system.
 2. Install lighting for Project identification sign.

3.3 SECURITY AND PROTECTION FACILITIES INSTALLATION

- A. Environmental Protection: Provide protection, operate temporary facilities, and conduct construction as required to comply with environmental regulations and that minimize possible air, waterway, and subsoil contamination or pollution or other undesirable effects.
 1. Comply with work restrictions specified in Division 01 Section "Summary."
- B. Security Enclosure and Lockup: Install temporary enclosure around partially completed areas of construction. Provide lockable entrances to prevent unauthorized entrance, vandalism, theft, and similar violations of security. Lock entrances at end of each workday.
- C. Barricades, Warning Signs, and Lights: Comply with requirements of authorities having jurisdiction for erecting structurally adequate barricades, including warning signs and lighting.
- D. Temporary Egress: Maintain temporary egress from existing occupied facilities as indicated and as required by authorities having jurisdiction.
- E. Temporary Partitions: Provide floor-to-ceiling dustproof partitions to limit dust and dirt migration and to separate areas occupied by Owner and users.
 1. Construct dustproof partitions with polyethylene sheet.
 2. Where fire-resistance-rated temporary partitions are indicated or are required by authorities having jurisdiction, construct partitions according to the rated assemblies.
 3. Protect air-handling equipment.
 4. Provide walk-off mats at each entrance through temporary partition.
- F. Temporary Fire Protection: Install and maintain temporary fire-protection facilities of types needed to protect against predictable and controllable fire losses. Comply with NFPA 241.
 1. Prohibit smoking in construction areas.
 2. Supervise welding operations, combustion-type temporary heating units, and similar sources of fire ignition according to requirements of authorities having jurisdiction.
 3. Develop and supervise an overall fire-prevention and -protection program for personnel at Project site. Review needs with local fire department and establish procedures to be followed. Instruct personnel in methods and procedures. Post warnings and information.

3.4 OPERATION, TERMINATION, AND REMOVAL

- A. Maintenance: Maintain facilities in good operating condition until removal.
 1. Maintain operation of temporary enclosures, heating, cooling, humidity control, ventilation, and similar facilities on a 24-hour basis where required to achieve indicated results and to avoid possibility of damage.
- B. Termination and Removal: Remove each temporary facility when need for its service has ended, when it has been replaced by authorized use of a permanent facility, or no later than Substantial Completion. Complete or, if necessary, restore permanent construction that may have been delayed because of interference with temporary facility. Repair damaged Work, clean exposed surfaces, and replace construction that cannot be satisfactorily repaired.
 1. Materials and facilities that constitute temporary facilities are property of Contractor. Owner reserves right to take possession of Project identification signs.
 2. At Substantial Completion, repair, renovate, and clean permanent facilities used during construction period. Comply with final cleaning requirements specified in Division 01 Section "Closeout Procedures."

END OF SECTION 015000

TEMPORARY FACILITIES AND CONTROLS

01 50 00 - 3

ADDENDUM #2