

**The Philadelphia Parking Authority  
701 Market Street, Suite 5400  
Philadelphia, PA 19106**

**RFP No. 22-23  
Surface Mount Anchors for Sign Poles  
Addendum Two**

To: See Email Distribution List  
From: Shannon Stewart  
Manager of Contract Administration  
Date: December 21, 2022  
No Pages: 1 plus (2) Appendices

This addendum is issued on December 21, 2022 prior to the proposal due date to add, delete, modify, clarify and/or to respond to questions submitted by prospective offerors regarding the work included in the above referenced solicitation.

**CHANGES TO THE BID DOCUMENT**

1. The work statement has been updated, please see Appendix A.

**QUESTIONS**

1. **Question:** The standard base plate that has been supplied to Philadelphia for years has a 10" X 10" base plate, not the 6" specified in the bid. My question is do you have a drawing available that shows the dimensions, the hole placement, the height of the square 2.25" square tube welded to the plate, and the finish of the base plate, galvanized, or powder coated.

**Response:** Please see Appendix B for drawings and the updated required dimensions of the surface mount anchors. Bidders must adhere to the materials and dimensions of the anchor and steel corner bolt and nut found in Appendix A & B.

**END OF ADDENDUM TWO**

Appendix A  
Updated Part IV - Work Statement

## PART IV

### WORK STATEMENT

#### IV-1. General

The Philadelphia Parking Authority seeks to procure high quality and cost-effective surface mount anchors under a one (1) year contract. The term of the contract may be extended by and at the sole option of the Authority for up to 2 (two) additional one-year renewals.

The successful Bidder should be able to provide surface mount anchors for 2" x 2" square post, hot dipped galvanized, that consist of furnishing a breakaway steel post. The Authority intends to purchase an annual minimum of 1,000 surface mount anchors with hardware included however, additional surface mount anchors may be purchased during the contract period.

#### IV-2. Specific

##### A. Surface Mount Anchor

1. The surface mount anchor for 2" x 2" square post.
  - a. 10" Square ¼" Thick Baseplate (ASTM A36).
  - b. (4) 2" x 2" x ¼" Thick Gussets (ASTM A36).
  - c. (4) 9/16" Holes for mounting with 1/2" Hardware in each corner 1" in from the edge of base plate.
  - d. 12" +/- Height Square Tube (ASTM A1011 Grade 50).
  - e. Assembly is Hot Dip Galvanized (ASTM 123).
2. The yield and tolerance must conform to PADOT 408 for breakaway capability.
3. The color must be the natural galvanized steel.

##### B. Hardware

1. 1/2" steel corner bolt and nut.

##### C. Delivery

1. All deliveries must be delivered within 30 days of an order being placed.
2. Contractor must give one (1) day notice prior to delivery.
3. All delivery costs must be included in the unit price.
4. Orders will be delivered to:

Philadelphia Parking Authority  
Taxicab and Limousine Division  
2530 S. Swanson Street  
Philadelphia, PA 19148  
Attn: Derek Wroton  
Business Phone: 215.409.5083  
Email: DWroton@philapark.org

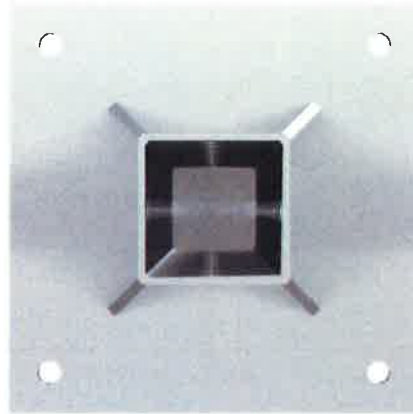
Appendix B  
Drawings, Specifications & Pictures of Anchor

## Engineering Specification and Submittal Sheet

Side View



Top View



Flat Mounted Concrete Base for square sign post. Temporary or Permanent installation.

### Available Sizes:

| <u>Part Number</u> | <u>Description:</u>         |
|--------------------|-----------------------------|
| FMCB175            | 1-3/4" Base for 1-1/2" Post |
| FMCB200            | 2" Base for 1-3/4" Post     |
| FMCB225            | 2-1/4" Base for 2" Post     |
| FMCB250            | 2-1/2" Base for 2-1/4" Post |

### Materials:

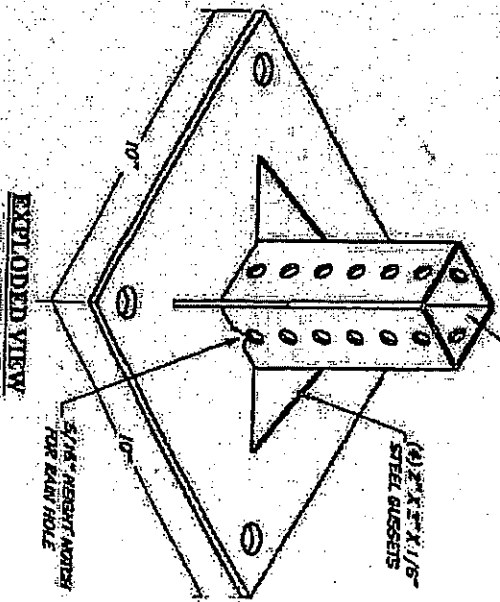
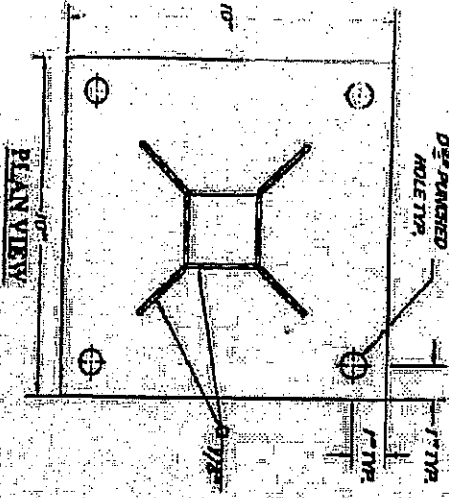
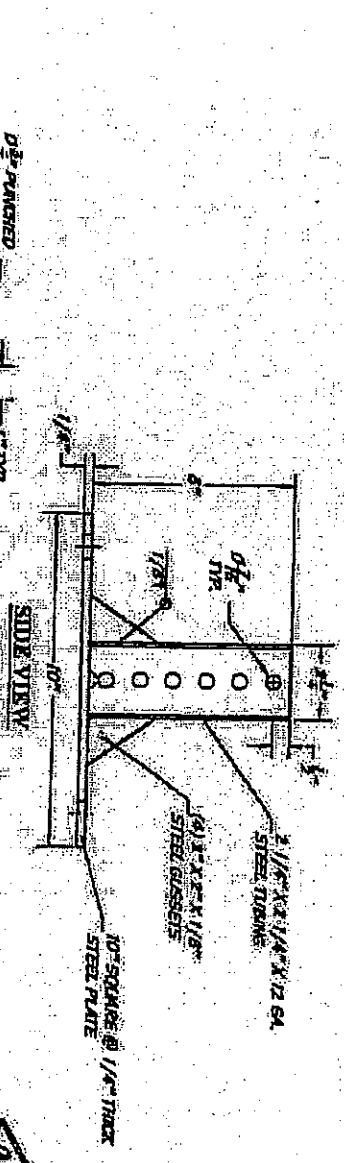
10" Square 1/4" Thick Baseplate (ASTM A36)  
(4) 2" x 2" x 1/4" Thick Gussets (ASTM A36)  
(4) 9/16" Holes for mounting with 1/2" Hardware in each corner 1" in from the edge of base plate  
12" +/- Height Square Tube (ASTM A1011 Grade 50) Size of tube varies (See Available Sizes above)  
Assembly is Hot Dip Galvanized (ASTM 123)

### Dimensions:

10" x 10" x 12"

UM-SM3L SURFACE MOUNT BASE FOR 2" SQUARE POST

| ID #  | DESCRIPTION  | QTY PER | QTY TOTAL |
|-------|--|---------|-----------|
| 1     | 10" X 10" X 1/4" THICK SQUARE STEEL PLATE                | 1       | 1         |
| 2     | 5" X 5" X 1/8" THICK TRIANGULAR STEEL BRUSSES            | 4       | 4         |
| 3     | 2 1/4" X 2 1/4" X 1/4" PERFORATED STEEL TUBING @ 6" LONG | 1       | 1         |
| TOTAL |  |         | 6         |



| REV | DATE     | DESCRIPTION                    |
|-----|----------|--------------------------------|
| 1   | 10/10/03 | BASE PLATE FOR 2" SQUARE POSTS |

31677 000 030  
Base, surface mount for 2" Square Post  
(part 2 of 1)

| REV | DATE | DESCRIPTION | BY | CHKD |
|-----|------|-------------|----|------|
|     |      |             |    |      |







